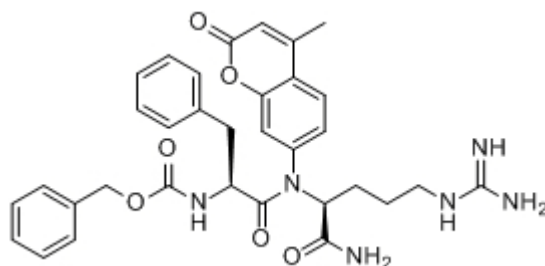


Z-F-R-AMC

Catalog #	Source	Reactivity	Applications
CCP1479	Synthetic		
Description	Peptide to Z-F-R-AMC		
Biological Description	A fluorogenic substrate for cruzipain, plasma kallikrein and soybean trypsin-like enzyme. Z-FR-AMC was also found to be an excellent substrate for the fluorometric assay of cathepsin B, cathepsin K, and cathepsin L as well as papain. Z-FR-AMC-is also an o		
Form	Lyophilized powder		
CAS Number	65147-22-0		
Molecular Formula	C33H36N6O6		
Molecular Weight	612.68		
Purity	> 95%		
Chemical Structure	Z - Phe - Arg - AMC		
Storage/Stability	Shipped at 4°C. Store at -20°C for one year.		
Structure			



Application key: E- ELISA, WB- Western blot, IH- Immunohistochemistry, IF- Immunofluorescence, FC- Flow cytometry, IC- Immunocytochemistry, IP- Immunoprecipitation, CHIP- Chromatin Immunoprecipitation, EMSA- Electrophoretic Mobility Shift Assay, SE- Sandwich ELISA, CBE- Cell-based ELISA, RNAi- RNA interference

Species reactivity key: H- Human, M- Mouse, R- Rat, B- Bovine, C- Chicken, D- Dog, Mk- Monkey, P- Pig, Rb- Rabbit, S- Sheep, Z- Zebrafish

COHESION BIOSCIENCES LIMITED

WEB
www.cohesionbio.com

ORDER
order@cohesionbio.com

SUPPORT
techsupport@cohesionbio.com

CUSTOM
custom@cohesionbio.com