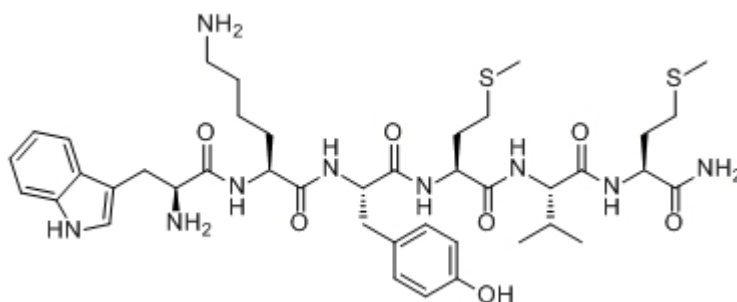


W-K-Y-M-V-M-NH₂

Catalog #	Source	Reactivity	Applications
CCP1475	Synthetic		
Description	Peptide to W-K-Y-M-V-M-NH ₂		
Biological Description	WKYMVM-NH ₂ activates exclusively the N-formylpeptide receptors FPRL1 and FPRL2 contrary to its epimer WKYVM-NH ₂ which activates all three receptors.		
Form	Lyophilized powder		
CAS Number	187986-11-4		
Molecular Formula	C ₄₁ H ₆₁ N ₉ O ₇ S ₂		
Molecular Weight	856.13		
Purity	> 95%		
Chemical Structure	H - Trp - Lys - Tyr - Met - Val - Met - NH ₂		
Storage/Stability	Shipped at 4°C. Store at -20°C for one year.		

Structure



Application key: E- ELISA, WB- Western blot, IH- Immunohistochemistry, IF- Immunofluorescence, FC- Flow cytometry, IC- Immunocytochemistry, IP- Immunoprecipitation, CHIP- Chromatin Immunoprecipitation, EMSA- Electrophoretic Mobility Shift Assay, SE- Sandwich ELISA, CBE- Cell-based ELISA, RNAi- RNA interference

Species reactivity key: H- Human, M- Mouse, R- Rat, B- Bovine, C- Chicken, D- Dog, Mk- Monkey, P- Pig, Rb- Rabbit, S- Sheep, Z- Zebrafish

COHESION BIOSCIENCES LIMITED

WEB
www.cohesionbio.com

ORDER
order@cohesionbio.com

SUPPORT
techsupport@cohesionbio.com

CUSTOM
custom@cohesionbio.com