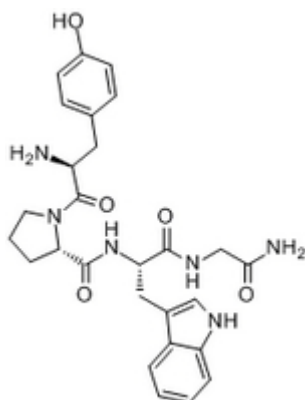


Tyr-W-MIF-1

| Catalog # | Source | Reactivity | Applications |
|-------------------------------|---|------------|--------------|
| CCP1456 | Synthetic | | |
| Description | Peptide to Tyr-W-MIF-1 | | |
| Biological Description | Tyr-W-MIF-I, a member of the Tyr-MIF-I family, was isolated from the frontal cortex of human brain tissue as well as from bovine hypothalami. It can act as an opiate agonist as well as an antagonist. As an opiate agonist, it was more potent than the other | | |
| Form | Lyophilized powder | | |
| CAS Number | 144450-13-5 | | |
| Molecular Formula | C27H32N6O5 | | |
| Molecular Weight | 520.59 | | |
| Purity | > 95% | | |
| Chemical Structure | H - Tyr - Pro - Trp - Gly - NH ₂ | | |
| Storage/Stability | Shipped at 4°C. Store at -20°C for one year. | | |
| Structure | | | |



Application key: E- ELISA, WB- Western blot, IH- Immunohistochemistry, IF- Immunofluorescence, FC- Flow cytometry, IC- Immunocytochemistry, IP- Immunoprecipitation, CHIP- Chromatin Immunoprecipitation, EMSA- Electrophoretic Mobility Shift Assay, SE- Sandwich ELISA, CBE- Cell-based ELISA, RNAi- RNA interference

Species reactivity key: H- Human, M- Mouse, R- Rat, B- Bovine, C- Chicken, D- Dog, Mk- Monkey, P- Pig, Rb- Rabbit, S- Sheep, Z- Zebrafish

COHESION BIOSCIENCES LIMITED

WEB
www.cohesionbio.com

ORDER
order@cohesionbio.com

SUPPORT
techsupport@cohesionbio.com

CUSTOM
custom@cohesionbio.com