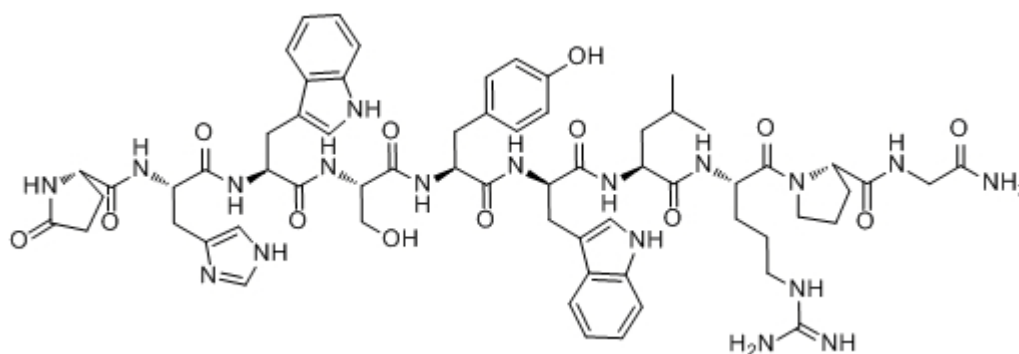


Triptorelin

Catalog #	Source	Reactivity	Applications
CCP1454	Synthetic		
Description	Peptide to Triptorelin		
Biological Description	LHRH agonist used in the treatment of prostate cancer. Triptorelin decreases the secretion of LH and FSH.		
Form	Lyophilized powder		
CAS Number	57773-63-4		
Molecular Formula	C ₆₄ H ₈₂ N ₁₈ O ₁₃		
Molecular Weight	1311.46		
Purity	> 95%		
Chemical Structure	pGlu - His - Trp - Ser - Tyr - D - Trp - Leu - Arg - Pro - Gly - NH ₂		
Storage/Stability	Shipped at 4°C. Store at -20°C for one year.		

Structure



Application key: E- ELISA, WB- Western blot, IH- Immunohistochemistry, IF- Immunofluorescence, FC- Flow cytometry, IC- Immunocytochemistry, IP- Immunoprecipitation, ChIP- Chromatin Immunoprecipitation, EMSA- Electrophoretic Mobility Shift Assay, SE- Sandwich ELISA, CBE- Cell-based ELISA, RNAi- RNA interference

Species reactivity key: H- Human, M- Mouse, R- Rat, B- Bovine, C- Chicken, D- Dog, Mk- Monkey, P- Pig, Rb- Rabbit, S- Sheep, Z- Zebrafish

COHESION BIOSCIENCES LIMITED

WEB
www.cohesionbio.com

ORDER
order@cohesionbio.com

SUPPORT
techsupport@cohesionbio.com

CUSTOM
custom@cohesionbio.com