

## Systemin

Catalog #	Source	Reactivity	Applications
CCP1444	Synthetic		

**Description** Peptide to Systemin

**Biological Description** Systemin was isolated from tomato leaves and was able to induce the synthesis of two wound-inducible proteinase inhibitor proteins.

**Form** Lyophilized powder

**CAS Number** 137181-56-7

**Molecular Formula** C<sub>85</sub>H<sub>144</sub>N<sub>26</sub>O<sub>28</sub>S

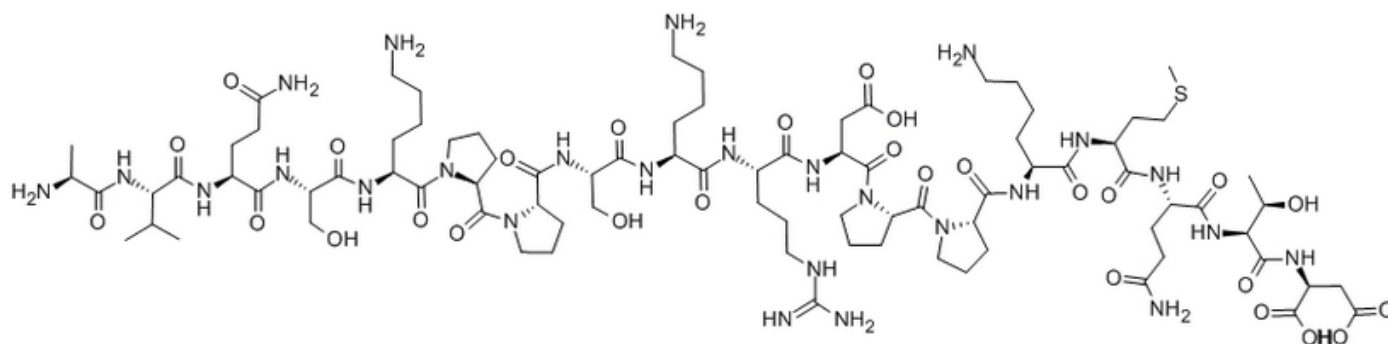
**Molecular Weight** 2010.32

**Purity** > 95%

**Chemical Structure** H - Ala - Val - Gln - Ser - Lys - Pro - Pro - Ser - Lys - Arg - Asp - Pro - Pro - Lys - Met - Gln - Thr - Asp - OH

**Storage/Stability** Shipped at 4°C. Store at -20°C for one year.

### Structure



**Application key:** E- ELISA, WB- Western blot, IH- Immunohistochemistry, IF- Immunofluorescence, FC- Flow cytometry, IC- Immunocytochemistry, IP- Immunoprecipitation, CHIP- Chromatin Immunoprecipitation, EMSA- Electrophoretic Mobility Shift Assay, SE- Sandwich ELISA, CBE- Cell-based ELISA, RNAi- RNA interference

**Species reactivity key:** H- Human, M- Mouse, R- Rat, B- Bovine, C- Chicken, D- Dog, Mk- Monkey, P- Pig, Rb- Rabbit, S- Sheep, Z- Zebrafish

### COHESION BIOSCIENCES LIMITED

**WEB**  
[www.cohesionbio.com](http://www.cohesionbio.com)

**ORDER**  
[order@cohesionbio.com](mailto:order@cohesionbio.com)

**SUPPORT**  
[techsupport@cohesionbio.com](mailto:techsupport@cohesionbio.com)

**CUSTOM**  
[custom@cohesionbio.com](mailto:custom@cohesionbio.com)