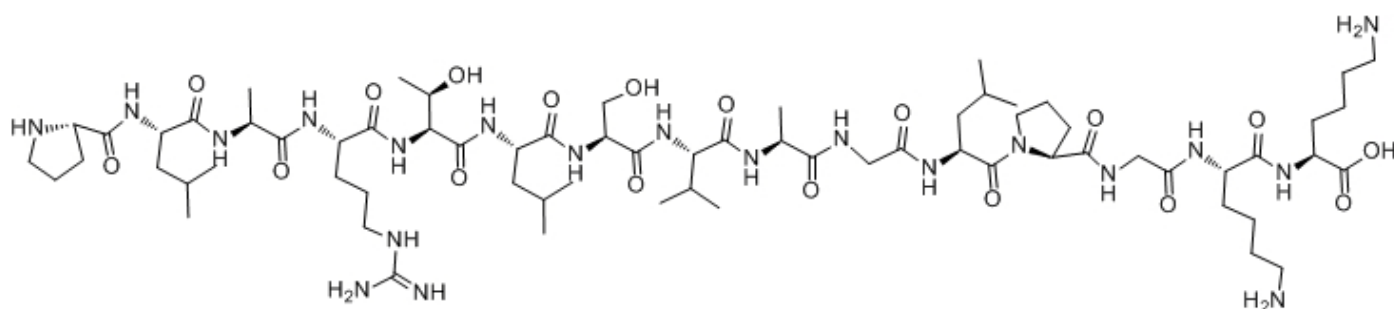


Syntide 2

Catalog #	Source	Reactivity	Applications
CCP1443	Synthetic		
Description	Peptide to Syntide 2		
Biological Description	Ca ²⁺ calmodulin-dependent protein kinase II and Ca ²⁺ phospholipid-dependent protein kinase (PKC) were selectively assayed using syntide 2 as substrate. The sequence of syntide 2 is homologous to phosphorylation site 2 in glycogen synthase.		
Form	Lyophilized powder		
CAS Number	108334-68-5		
Molecular Formula	C68H122N20O18		
Molecular Weight	1507.85		
Purity	> 95%		
Chemical Structure	H - Pro - Leu - Ala - Arg - Thr - Leu - Ser - Val - Ala - Gly - Leu - Pro - Gly - Lys - Lys - OH		
Storage/Stability	Shipped at 4°C. Store at -20°C for one year.		

Structure



Application key: E- ELISA, WB- Western blot, IH- Immunohistochemistry, IF- Immunofluorescence, FC- Flow cytometry, IC- Immunocytochemistry, IP- Immunoprecipitation, CHIP- Chromatin Immunoprecipitation, EMSA- Electrophoretic Mobility Shift Assay, SE- Sandwich ELISA, CBE- Cell-based ELISA, RNAi- RNA interference

Species reactivity key: H- Human, M- Mouse, R- Rat, B- Bovine, C- Chicken, D- Dog, Mk- Monkey, P- Pig, Rb- Rabbit, S- Sheep, Z- Zebrafish

COHESION BIOSCIENCES LIMITED

WEB
www.cohesionbio.com

ORDER
order@cohesionbio.com

SUPPORT
techsupport@cohesionbio.com

CUSTOM
custom@cohesionbio.com