

## Spinorphin, Bovine

Catalog #	Source	Reactivity	Applications
CCP1431	Synthetic		

**Description** Peptide to Spinorphin, Bovine

### Biological Description

**Form** Lyophilized powder

**CAS Number** 137201-62-8

**Molecular Formula** C<sub>45</sub>H<sub>64</sub>N<sub>8</sub>O<sub>10</sub>

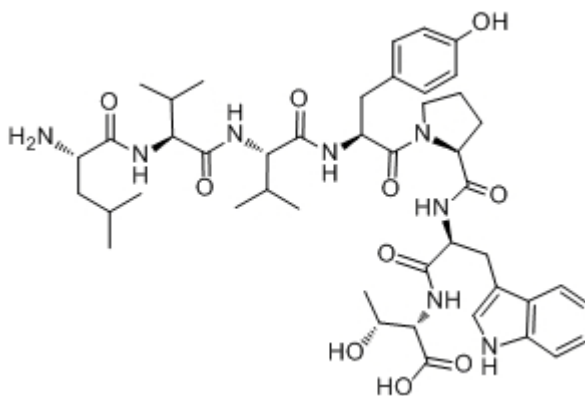
**Molecular Weight** 877.06

**Purity** > 95%

**Chemical Structure** H - Leu - Val - Val - Tyr - Pro - Trp - Thr - OH

**Storage/Stability** Shipped at 4°C. Store at -20°C for one year.

### Structure



**Application key:** E- ELISA, WB- Western blot, IH- Immunohistochemistry, IF- Immunofluorescence, FC- Flow cytometry, IC- Immunocytochemistry, IP- Immunoprecipitation, ChIP- Chromatin Immunoprecipitation, EMSA- Electrophoretic Mobility Shift Assay, SE- Sandwich ELISA, CBE- Cell-based ELISA, RNAi- RNA interference

**Species reactivity key:** H- Human, M- Mouse, R- Rat, B- Bovine, C- Chicken, D- Dog, Mk- Monkey, P- Pig, Rb- Rabbit, S- Sheep, Z- Zebrafish

## COHESION BIOSCIENCES LIMITED

**WEB**  
[www.cohesionbio.com](http://www.cohesionbio.com)

**ORDER**  
[order@cohesionbio.com](mailto:order@cohesionbio.com)

**SUPPORT**  
[techsupport@cohesionbio.com](mailto:techsupport@cohesionbio.com)

**CUSTOM**  
[custom@cohesionbio.com](mailto:custom@cohesionbio.com)