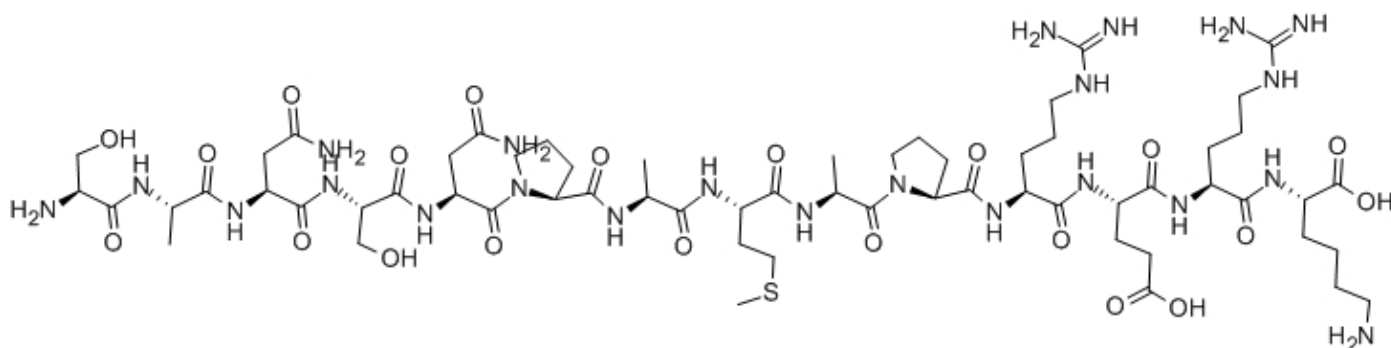


Somatostatin 28 (1-14)

Catalog #	Source	Reactivity	Applications
CCP1426	Synthetic		
Description	Peptide to Somatostatin 28 (1-14)		
Biological Description			
Form	Lyophilized powder		
CAS Number	79243-10-0		
Molecular Formula	C ₆₁ H ₁₀₅ N ₂₃ O ₂₁ S		
Molecular Weight	1528.72		
Purity	> 95%		
Chemical Structure	H - Ser - Ala - Asn - Ser - Asn - Pro - Ala - Met - Ala - Pro - Arg - Glu - Arg - Lys - OH		
Storage/Stability	Shipped at 4°C. Store at -20°C for one year.		

Structure



Application key: E- ELISA, WB- Western blot, IH- Immunohistochemistry, IF- Immunofluorescence, FC- Flow cytometry, IC- Immunocytochemistry, IP- Immunoprecipitation, ChIP- Chromatin Immunoprecipitation, EMSA- Electrophoretic Mobility Shift Assay, SE- Sandwich ELISA, CBE- Cell-based ELISA, RNAi- RNA interference

Species reactivity key: H- Human, M- Mouse, R- Rat, B- Bovine, C- Chicken, D- Dog, Mk- Monkey, P- Pig, Rb- Rabbit, S- Sheep, Z- Zebrafish

COHESION BIOSCIENCES LIMITED

WEB

www.cohesionbio.com

ORDER

order@cohesionbio.com

SUPPORT

techsupport@cohesionbio.com

CUSTOM

custom@cohesionbio.com