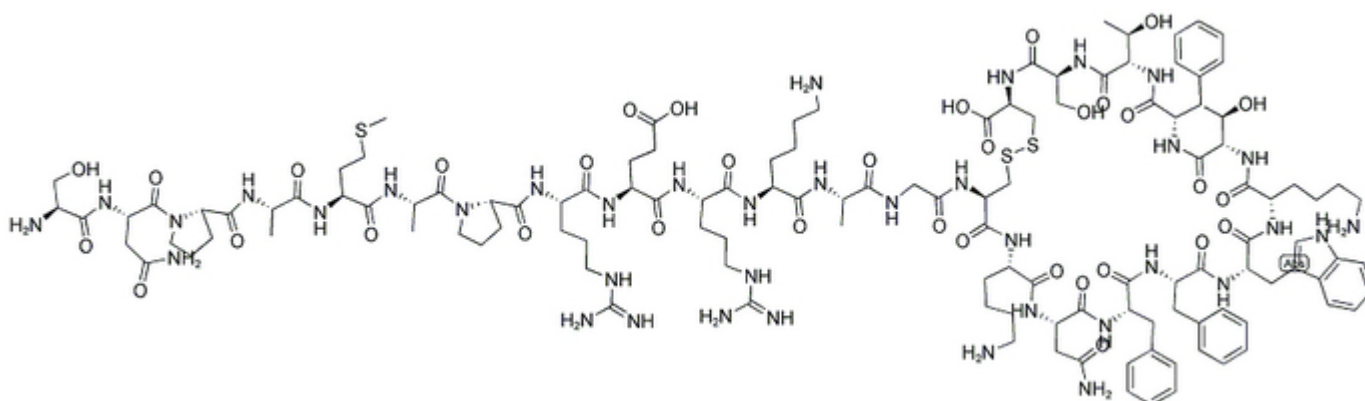


Somatostatin 25

Catalog #	Source	Reactivity	Applications
CCP1424	Synthetic		
Description	Peptide to Somatostatin 25		
Biological Description	Somatostatin-25 has been isolated from ovine hypothalamus and showed somatostatin-like immunoactivity and in vitro bioactivity. Based on an in vitro bioassay this derivative appears to be more potent than somatostatin.		
Form	Lyophilized powder		
CAS Number	76461-17-1		
Molecular Formula	C127H191N37O34S3		
Molecular Weight	2876.36		
Purity	> 95%		
Chemical Structure	H - Ser - Asn - Pro - Ala - Met - Ala - Pro - Arg - Glu - Arg - Lys - Ala - Gly - Cys - Lys - Asn - Phe - Phe - Trp - Lys - Thr - Phe - Thr - Ser - Cys - OH (Disulfide bridge Cys14 - Cys25)		
Storage/Stability	Shipped at 4°C. Store at -20°C for one year.		

Structure



Application key: E- ELISA, WB- Western blot, IH- Immunohistochemistry, IF- Immunofluorescence, FC- Flow cytometry, IC- Immunocytochemistry, IP- Immunoprecipitation, ChIP- Chromatin Immunoprecipitation, EMSA- Electrophoretic Mobility Shift Assay, SE- Sandwich ELISA, CBE- Cell-based ELISA, RNAi- RNA interference

Species reactivity key: H- Human, M- Mouse, R- Rat, B- Bovine, C- Chicken, D- Dog, Mk- Monkey, P- Pig, Rb- Rabbit, S- Sheep, Z- Zebrafish

COHESION BIOSCIENCES LIMITED

WEB
www.cohesionbio.com

ORDER
order@cohesionbio.com

SUPPORT
techsupport@cohesionbio.com

CUSTOM
custom@cohesionbio.com

Product Data Sheet

Application key: E- ELISA, WB- Western blot, IH- Immunohistochemistry, IF- Immunofluorescence, FC- Flow cytometry, IC- Immunocytochemistry, IP- Immunoprecipitation, CHIP- Chromatin Immunoprecipitation, EMSA- Electrophoretic Mobility Shift Assay, SE- Sandwich ELISA, CBE- Cell-based ELISA, RNAi- RNA interference

Species reactivity key: H- Human, M- Mouse, R- Rat, B- Bovine, C- Chicken, D- Dog, Mk- Monkey, P- Pig, Rb- Rabbit, S- Sheep, Z- Zebrafish

COHESION BIOSCIENCES LIMITED

WEB

www.cohesionbio.com

ORDER

order@cohesionbio.com

SUPPORT

techsupport@cohesionbio.com

CUSTOM

custom@cohesionbio.com