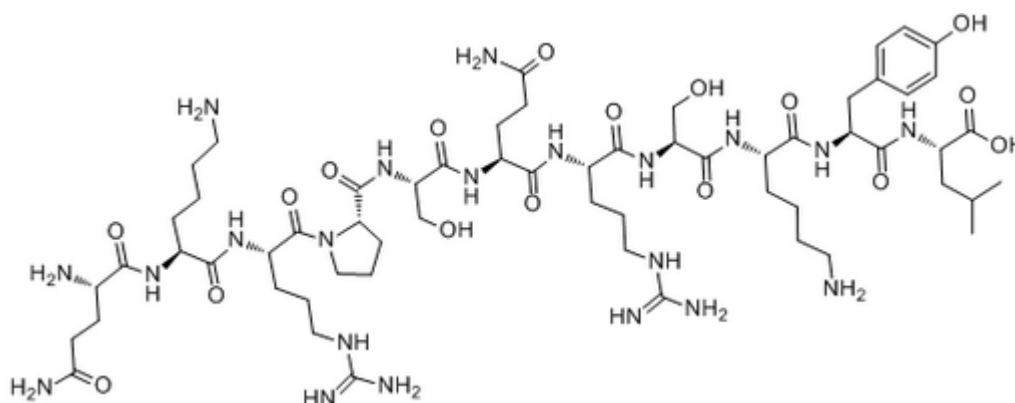


Q-K-R-P-S-Q-R-S-K-Y-L

Catalog #	Source	Reactivity	Applications
CCP1393	Synthetic		
Description	Peptide to Q-K-R-P-S-Q-R-S-K-Y-L		
Biological Description	This fragment of the bovine myelin basic protein (residues 4-14) has been described as the most specific substrate for the selective assay of protein kinase C. Its Km value of 7 μ M is comparable with the values for H1 histone and intact myelin basic prote		
Form	Lyophilized powder		
CAS Number	126768-94-3		
Molecular Formula	C60H103N21O17		
Molecular Weight	1390.62		
Purity	> 95%		
Chemical Structure	H - Gln - Lys - Arg - Pro - Ser - Gln - Arg - Ser - Lys - Tyr - Leu - OH		
Storage/Stability	Shipped at 4°C. Store at -20°C for one year.		

Structure

Application key: E- ELISA, WB- Western blot, IH- Immunohistochemistry, IF- Immunofluorescence, FC- Flow cytometry, IC- Immunocytochemistry, IP- Immunoprecipitation, ChIP- Chromatin Immunoprecipitation, EMSA- Electrophoretic Mobility Shift Assay, SE- Sandwich ELISA, CBE- Cell-based ELISA, RNAi- RNA interference

Species reactivity key: H- Human, M- Mouse, R- Rat, B- Bovine, C- Chicken, D- Dog, Mk- Monkey, P- Pig, Rb- Rabbit, S- Sheep, Z- Zebrafish

COHESION BIOSCIENCES LIMITED**WEB**www.cohesionbio.com**ORDER**order@cohesionbio.com**SUPPORT**techsupport@cohesionbio.com**CUSTOM**custom@cohesionbio.com