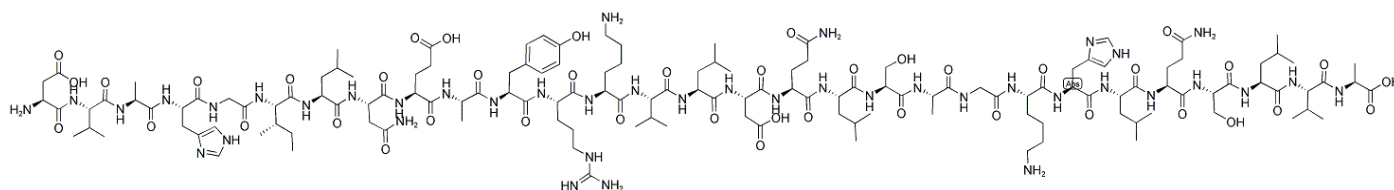


PRP, Human

Catalog #	Source	Reactivity	Applications
CCP1389	Synthetic		
Description	Peptide to PRP, Human		
Biological Description	PAC1, VPAC1 and VPAC2 receptor antagonist. Excitatory neuropeptide. Induces Ca ²⁺ mobilization. Role in hypertension and stress responses.		
Form	Lyophilized powder		
CAS Number			
Molecular Formula	C139H229N41O42		
Molecular Weight	3146.62		
Purity	> 95%		
Chemical Structure	H - Asp - Val - Ala - His - Gly - Ile - Leu - Asn - Glu - Ala - Tyr - Arg - Lys - Val - Leu - Asp - Gln - Leu - Ser - Ala - Gly - Lys - His - Leu - Gln - Ser - Leu - Val - Ala - OH		
Storage/Stability	Shipped at 4°C. Store at -20°C for one year.		

Structure



Application key: E- ELISA, WB- Western blot, IH- Immunohistochemistry, IF- Immunofluorescence, FC- Flow cytometry, IC- Immunocytochemistry, IP- Immunoprecipitation, ChIP- Chromatin Immunoprecipitation, EMSA- Electrophoretic Mobility Shift Assay, SE- Sandwich ELISA, CBE- Cell-based ELISA, RNAi- RNA interference

Species reactivity key: H- Human, M- Mouse, R- Rat, B- Bovine, C- Chicken, D- Dog, Mk- Monkey, P- Pig, Rb- Rabbit, S- Sheep, Z- Zebrafish

COHESION BIOSCIENCES LIMITED

WEB

www.cohesionbio.com

ORDER

order@cohesionbio.com

SUPPORT

techsupport@cohesionbio.com

CUSTOM

custom@cohesionbio.com