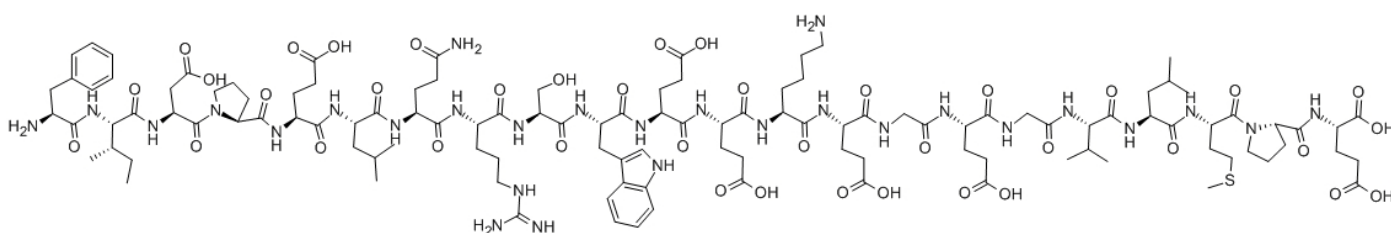


Prepro TRH (178-199)

Catalog #	Source	Reactivity	Applications
CCP1384	Synthetic		
Description	Peptide to Prepro TRH (178-199)		
Biological Description	Prepro-TRH (178-199) inhibited basal and CRF-stimulated ACTH synthesis and secretion in cultured primary anterior pituitary cells. It has been shown that this peptide is processed from prepro-TRH in vivo and fulfills the criteria for a physiological corti		
Form	Lyophilized powder		
CAS Number	122018-92-2		
Molecular Formula	C116H176N28O39S		
Molecular Weight	2618.92		
Purity	> 95%		
Chemical Structure	H - Phe - Ile - Asp - Pro - Glu - Leu - Gln - Arg - Ser - Trp - Glu - Glu - Lys - Glu - Gly - Glu - Gly - Val - Leu - Met - Pro - Glu - OH		
Storage/Stability	Shipped at 4°C. Store at -20°C for one year.		

Structure



Application key: E- ELISA, WB- Western blot, IH- Immunohistochemistry, IF- Immunofluorescence, FC- Flow cytometry, IC- Immunocytochemistry, IP- Immunoprecipitation, CHIP- Chromatin Immunoprecipitation, EMSA- Electrophoretic Mobility Shift Assay, SE- Sandwich ELISA, CBE- Cell-based ELISA, RNAi- RNA interference

Species reactivity key: H- Human, M- Mouse, R- Rat, B- Bovine, C- Chicken, D- Dog, Mk- Monkey, P- Pig, Rb- Rabbit, S- Sheep, Z- Zebrafish

COHESION BIOSCIENCES LIMITED

WEB
www.cohesionbio.com

ORDER
order@cohesionbio.com

SUPPORT
techsupport@cohesionbio.com

CUSTOM
custom@cohesionbio.com