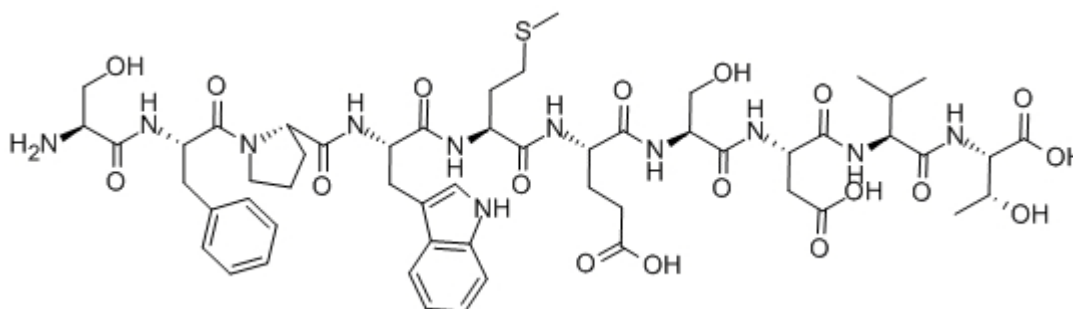


Prepro TRH (160-169)

Catalog #	Source	Reactivity	Applications
CCP1383	Synthetic		
Description	Peptide to Prepro TRH (160-169)		
Biological Description	This neuropeptide, originally isolated from bovine hypothalamus, corresponds to the deduced rat prepro TRH (160-169) sequence and gives the first direct chemical evidence for non-TRH peptides originating from the TRH precursor in vivo. The decapeptide pot		
Form	Lyophilized powder		
CAS Number	122018-91-1		
Molecular Formula	C54H75N11O18S		
Molecular Weight	1198.33		
Purity	> 95%		
Chemical Structure	H - Ser - Phe - Pro - Trp - Met - Glu - Ser - Asp - Val - Thr - OH		
Storage/Stability	Shipped at 4°C. Store at -20°C for one year.		

Structure



Application key: E- ELISA, WB- Western blot, IH- Immunohistochemistry, IF- Immunofluorescence, FC- Flow cytometry, IC- Immunocytochemistry, IP- Immunoprecipitation, CHIP- Chromatin Immunoprecipitation, EMSA- Electrophoretic Mobility Shift Assay, SE- Sandwich ELISA, CBE- Cell-based ELISA, RNAi- RNA interference

Species reactivity key: H- Human, M- Mouse, R- Rat, B- Bovine, C- Chicken, D- Dog, Mk- Monkey, P- Pig, Rb- Rabbit, S- Sheep, Z- Zebrafish

COHESION BIOSCIENCES LIMITED

WEB
www.cohesionbio.com

ORDER
order@cohesionbio.com

SUPPORT
techsupport@cohesionbio.com

CUSTOM
custom@cohesionbio.com