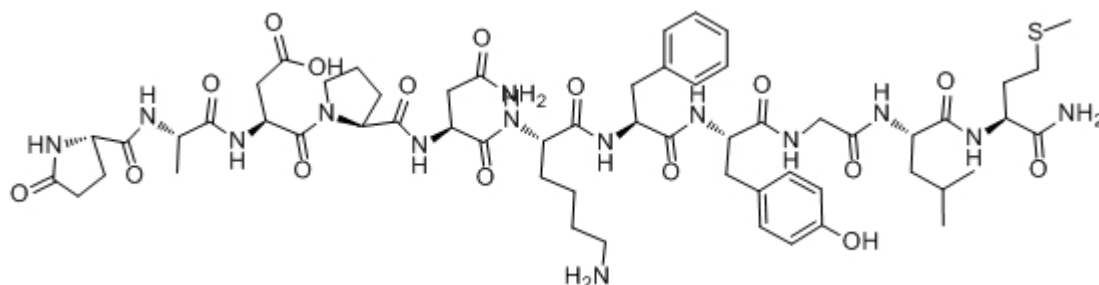


Physalaemin

| Catalog # | Source | Reactivity | Applications |
|-------------------------------|---|------------|--------------|
| CCP1381 | Synthetic | | |
| Description | Peptide to Physalaemin | | |
| Biological Description | Physalaemin exerts a potent hypotensive action and stimulates extravascular smooth muscle. Physalaemin is a poor inhibitor of water-intake but potently lowers arterial blood pressure. | | |
| Form | Lyophilized powder | | |
| CAS Number | 2507-24-6 | | |
| Molecular Formula | C58H84N14O16S | | |
| Molecular Weight | 1265.48 | | |
| Purity | > 95% | | |
| Chemical Structure | pGlu - Ala - Asp - Pro - Asn - Lys - Phe - Tyr - Gly - Leu - Met - NH ₂ | | |
| Storage/Stability | Shipped at 4°C. Store at -20°C for one year. | | |

Structure



Application key: E- ELISA, WB- Western blot, IH- Immunohistochemistry, IF- Immunofluorescence, FC- Flow cytometry, IC- Immunocytochemistry, IP- Immunoprecipitation, CHIP- Chromatin Immunoprecipitation, EMSA- Electrophoretic Mobility Shift Assay, SE- Sandwich ELISA, CBE- Cell-based ELISA, RNAi- RNA interference

Species reactivity key: H- Human, M- Mouse, R- Rat, B- Bovine, C- Chicken, D- Dog, Mk- Monkey, P- Pig, Rb- Rabbit, S- Sheep, Z- Zebrafish

COHESION BIOSCIENCES LIMITED

WEB
www.cohesionbio.com

ORDER
order@cohesionbio.com

SUPPORT
techsupport@cohesionbio.com

CUSTOM
custom@cohesionbio.com