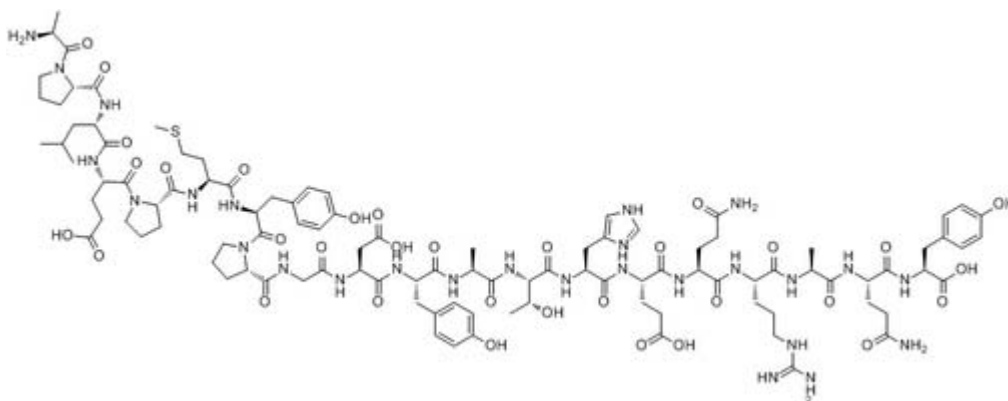


Pancreatic Polypeptide, Rat

Catalog #	Source	Reactivity	Applications
CCP1378	Synthetic		
Description	Peptide to Pancreatic Polypeptide, Rat		
Biological Description			
Form	Lyophilized powder		
CAS Number	90419-12-8		
Molecular Formula	C195H298N58O57S		
Molecular Weight	4398.9		
Purity	> 95%		
Chemical Structure	Ala - Pro - Leu - Glu - Pro - Met - Tyr - Pro - Gly - Asp - Tyr - Ala - Thr - His - Glu - Gln - Arg - Ala - Gln - Tyr - Glu - Thr - Gln - Leu - Arg - Arg - Tyr - Ile - Asn - Thr - Leu - Thr - Arg - Pro - Arg - Tyr - NH ₂		
Storage/Stability	Shipped at 4°C. Store at -20°C for one year.		

Structure



Application key: E- ELISA, WB- Western blot, IH- Immunohistochemistry, IF- Immunofluorescence, FC- Flow cytometry, IC- Immunocytochemistry, IP- Immunoprecipitation, ChIP- Chromatin Immunoprecipitation, EMSA- Electrophoretic Mobility Shift Assay, SE- Sandwich ELISA, CBE- Cell-based ELISA, RNAi- RNA interference

Species reactivity key: H- Human, M- Mouse, R- Rat, B- Bovine, C- Chicken, D- Dog, Mk- Monkey, P- Pig, Rb- Rabbit, S- Sheep, Z- Zebrafish

COHESION BIOSCIENCES LIMITED

WEB
www.cohesionbio.com

ORDER
order@cohesionbio.com

SUPPORT
techsupport@cohesionbio.com

CUSTOM
custom@cohesionbio.com