

PACAP (6-38), Human, Ovine, Rat

Catalog #	Source	Reactivity	Applications
CCP1372	Synthetic		

Description Peptide to PACAP (6-38), Human, Ovine, Rat

Biological Description The PACAP selective antagonist, PACAP (6-38), is a much more potent and selective inhibitor of PACAP-27-stimulated pituitary adenylate cyclase than PACAP (6-27). K_i values for the inhibition of the enzyme were 7 nM and 150 nM respectively.

Form Lyophilized powder

CAS Number 143748-18-9

Molecular Formula C203H331N63O65S

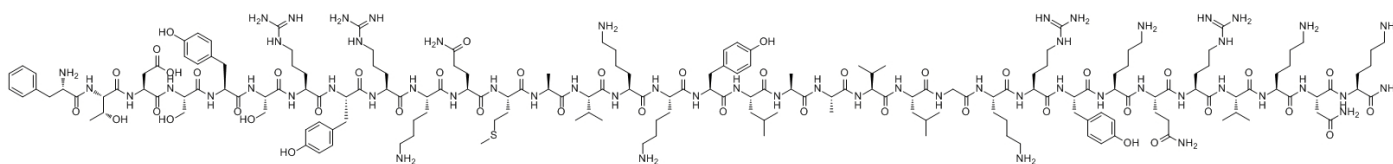
Molecular Weight 4534.4

Purity > 95%

Chemical Structure His - Ser - Asp - Gly - Ile - Phe - Thr - Asp - Ser - Tyr - Ser - Arg - Tyr - Arg - Lys - Gln - Met - Ala - Val - Lys - Lys - Tyr - Leu - Ala - Ala - Val - Leu - Gly - Lys - Arg - Tyr - Lys - Gln - Arg - Val - Lys - Asn - Lys - NH₂

Storage/Stability Shipped at 4°C. Store at -20°C for one year.

Structure



Application key: E- ELISA, WB- Western blot, IH- Immunohistochemistry, IF- Immunofluorescence, FC- Flow cytometry, IC- Immunocytochemistry, IP- Immunoprecipitation, CHIP- Chromatin Immunoprecipitation, EMSA- Electrophoretic Mobility Shift Assay, SE- Sandwich ELISA, CBE- Cell-based ELISA, RNAi- RNA interference

Species reactivity key: H- Human, M- Mouse, R- Rat, B- Bovine, C- Chicken, D- Dog, Mk- Monkey, P- Pig, Rb- Rabbit, S- Sheep, Z- Zebrafish

COHESION BIOSCIENCES LIMITED

WEB
www.cohesionbio.com

ORDER
order@cohesionbio.com

SUPPORT
techsupport@cohesionbio.com

CUSTOM
custom@cohesionbio.com