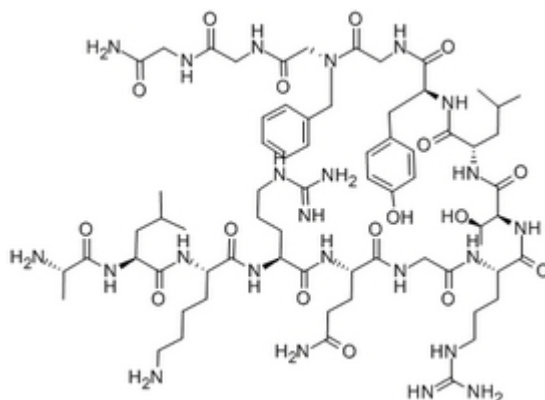


## Osteogenic Growth Peptide

Catalog #	Source	Reactivity	Applications
CCP1362	Synthetic		
<b>Description</b>	Peptide to Osteogenic Growth Peptide		
<b>Biological Description</b>	Osteogenic growth peptide was originally isolated from cultured regenerating rat bone marrow. The 14-amino acid peptide is identical in sequence to the C-terminus of histone H4. Synthetic OGP stimulates the proliferation and alkaline phosphatase activity		
<b>Form</b>	Lyophilized powder		
<b>CAS Number</b>	132996-61-3		
<b>Molecular Formula</b>	C <sub>68</sub> H <sub>110</sub> N <sub>22</sub> O <sub>18</sub>		
<b>Molecular Weight</b>	1523.74		
<b>Purity</b>	> 95%		
<b>Chemical Structure</b>	Ala - Leu - Lys - Arg - Gln - Gly - Arg - Thr - Leu - Tyr - Gly - Phe - Gly - Gly		
<b>Storage/Stability</b>	Shipped at 4°C. Store at -20°C for one year.		
<b>Structure</b>			



**Application key:** E- ELISA, WB- Western blot, IH- Immunohistochemistry, IF- Immunofluorescence, FC- Flow cytometry, IC- Immunocytochemistry, IP- Immunoprecipitation, ChIP- Chromatin Immunoprecipitation, EMSA- Electrophoretic Mobility Shift Assay, SE- Sandwich ELISA, CBE- Cell-based ELISA, RNAi- RNA interference

**Species reactivity key:** H- Human, M- Mouse, R- Rat, B- Bovine, C- Chicken, D- Dog, Mk- Monkey, P- Pig, Rb- Rabbit, S- Sheep, Z- Zebrafish

### COHESION BIOSCIENCES LIMITED

**WEB**  
www.cohesionbio.com

**ORDER**  
order@cohesionbio.com

**SUPPORT**  
techsupport@cohesionbio.com

**CUSTOM**  
custom@cohesionbio.com