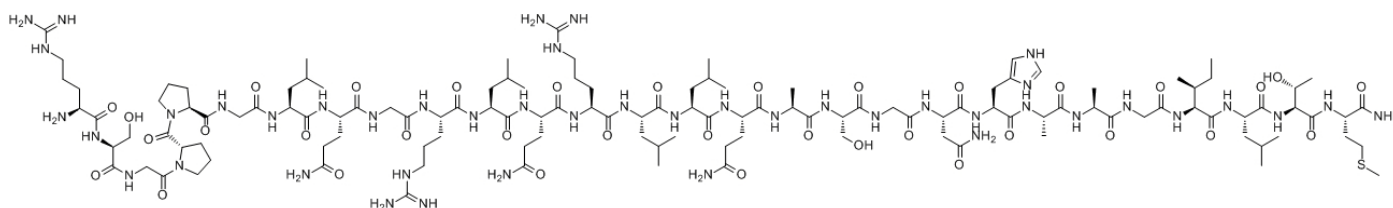


## Orexin B, Human

Catalog #	Source	Reactivity	Applications
CCP1360	Synthetic		
<b>Description</b>	Peptide to Orexin B, Human		
<b>Biological Description</b>	Like orexin A, orexin B is a hypothalamic neuropeptide regulating the feeding behavior. Central administration of orexin B to rats stimulated food consumption in a similar manner to orexin A, but the effect did not last as long as that of orexin A. The af		
<b>Form</b>	Lyophilized powder		
<b>CAS Number</b>	205640-91-1		
<b>Molecular Formula</b>	C123H212N44O35S		
<b>Molecular Weight</b>	2899.4		
<b>Purity</b>	> 95%		
<b>Chemical Structure</b>	Arg - Ser - Gly - Pro - Pro - Gly - Leu - Gln - Gly - Arg - Leu - Gln - Arg - Leu - Leu - Gln - Ala - Ser - Gly - Asn - His - Ala - Ala - Gly - Ile - Leu - Thr - Met - NH <sub>2</sub>		
<b>Storage/Stability</b>	Shipped at 4°C. Store at -20°C for one year.		

### Structure



**Application key:** E- ELISA, WB- Western blot, IH- Immunohistochemistry, IF- Immunofluorescence, FC- Flow cytometry, IC- Immunocytochemistry, IP- Immunoprecipitation, ChIP- Chromatin Immunoprecipitation, EMSA- Electrophoretic Mobility Shift Assay, SE- Sandwich ELISA, CBE- Cell-based ELISA, RNAi- RNA interference

**Species reactivity key:** H- Human, M- Mouse, R- Rat, B- Bovine, C- Chicken, D- Dog, Mk- Monkey, P- Pig, Rb- Rabbit, S- Sheep, Z- Zebrafish

### COHESION BIOSCIENCES LIMITED

**WEB**  
www.cohesionbio.com

**ORDER**  
order@cohesionbio.com

**SUPPORT**  
techsupport@cohesionbio.com

**CUSTOM**  
custom@cohesionbio.com