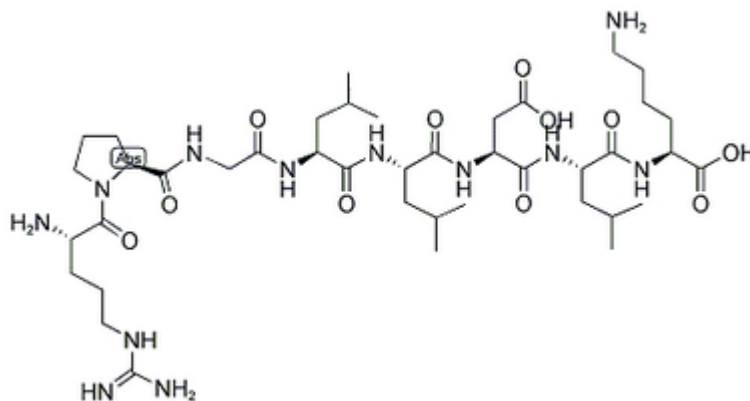


## Octaneuropeptide

| Catalog #                     | Source  | Reactivity | Applications |
|-------------------------------|---|------------|--------------|
| CCP1355                       | Synthetic                                     |            |              |
| <b>Description</b>            | Peptide to Octaneuropeptide                   |            |              |
| <b>Biological Description</b> |   |            |              |
| <b>Form</b>                   | Lyophilized powder                            |            |              |
| <b>CAS Number</b>             |   |            |              |
| <b>Molecular Formula</b>      | C41H74N12O11                                  |            |              |
| <b>Molecular Weight</b>       | 911.1   |            |              |
| <b>Purity</b>                 | > 95%   |            |              |
| <b>Chemical Structure</b>     | Arg - Pro - Gly - Leu - Leu - Asp - Leu - Lys |            |              |
| <b>Storage/Stability</b>      | Shipped at 4°C. Store at -20°C for one year.  |            |              |
| <b>Structure</b>              |   |            |              |



**Application key:** E- ELISA, WB- Western blot, IH- Immunohistochemistry, IF- Immunofluorescence, FC- Flow cytometry, IC- Immunocytochemistry, IP- Immunoprecipitation, CHIP- Chromatin Immunoprecipitation, EMSA- Electrophoretic Mobility Shift Assay, SE- Sandwich ELISA, CBE- Cell-based ELISA, RNAi- RNA interference

**Species reactivity key:** H- Human, M- Mouse, R- Rat, B- Bovine, C- Chicken, D- Dog, Mk- Monkey, P- Pig, Rb- Rabbit, S- Sheep, Z- Zebrafish

### COHESION BIOSCIENCES LIMITED

**WEB**  
[www.cohesionbio.com](http://www.cohesionbio.com)

**ORDER**  
[order@cohesionbio.com](mailto:order@cohesionbio.com)

**SUPPORT**  
[techsupport@cohesionbio.com](mailto:techsupport@cohesionbio.com)

**CUSTOM**  
[custom@cohesionbio.com](mailto:custom@cohesionbio.com)