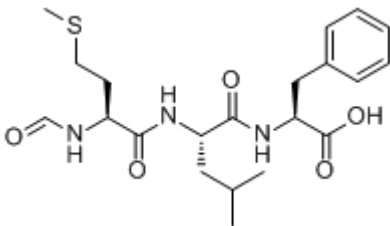
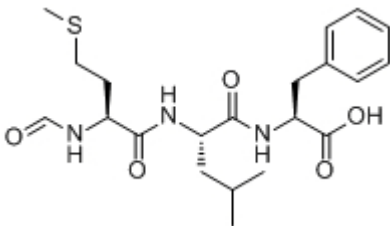


N-Formyl-Met-Leu-Phe

Catalog #	Source	Reactivity	Applications
CCP1349	Synthetic		
Description	Peptide to N-Formyl-Met-Leu-Phe		
Biological Description	Potent endogenous chemotactic peptide and agonist for the formyl peptide receptor 1 (FPR1) (K _i = 38 nM). Chemoattractant for phagocytic leukocytes. Stimulates random and directed locomotion. Inducer of superoxide release.		
Form	Lyophilized powder		
CAS Number	59880-97-6		
Molecular Formula	C ₂₁ H ₃₁ N ₃ O ₅ S		
Molecular Weight	437.6		
Purity	> 95%		
Chemical Structure	For - Met - Leu - Phe - OH		
Storage/Stability	Shipped at 4°C. Store at -20°C for one year.		
Structure			



Application key: E- ELISA, WB- Western blot, IH- Immunohistochemistry, IF- Immunofluorescence, FC- Flow cytometry, IC- Immunocytochemistry, IP- Immunoprecipitation, ChIP- Chromatin Immunoprecipitation, EMSA- Electrophoretic Mobility Shift Assay, SE- Sandwich ELISA, CBE- Cell-based ELISA, RNAi- RNA interference

Species reactivity key: H- Human, M- Mouse, R- Rat, B- Bovine, C- Chicken, D- Dog, Mk- Monkey, P- Pig, Rb- Rabbit, S- Sheep, Z- Zebrafish

COHESION BIOSCIENCES LIMITED

WEB
www.cohesionbio.com

ORDER
order@cohesionbio.com

SUPPORT
techsupport@cohesionbio.com

CUSTOM
custom@cohesionbio.com