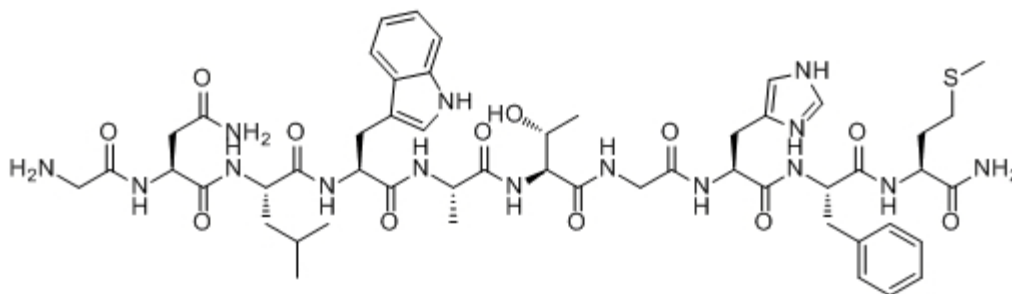


## Neuromedin B, Human, Porcine, Rat

| Catalog #                     | Source  | Reactivity | Applications |
|-------------------------------|---|------------|--------------|
| CCP1334                       | Synthetic   |            |              |
| <b>Description</b>            | Peptide to Neuromedin B, Human, Porcine, Rat                                |            |              |
| <b>Biological Description</b> |   |            |              |
| <b>Form</b>                   | Lyophilized powder  |            |              |
| <b>CAS Number</b>             | 87096-84-2  |            |              |
| <b>Molecular Formula</b>      | C52H73N15O12S   |            |              |
| <b>Molecular Weight</b>       | 1132.3  |            |              |
| <b>Purity</b>                 | > 95%   |            |              |
| <b>Chemical Structure</b>     | Gly - Asn - Leu - Trp - Ala - Thr - Gly - His - Phe - Met - NH <sub>2</sub> |            |              |
| <b>Storage/Stability</b>      | Shipped at 4°C. Store at -20°C for one year.                                |            |              |

### Structure



**Application key:** E- ELISA, WB- Western blot, IH- Immunohistochemistry, IF- Immunofluorescence, FC- Flow cytometry, IC- Immunocytochemistry, IP- Immunoprecipitation, CHIP- Chromatin Immunoprecipitation, EMSA- Electrophoretic Mobility Shift Assay, SE- Sandwich ELISA, CBE- Cell-based ELISA, RNAi- RNA interference

**Species reactivity key:** H- Human, M- Mouse, R- Rat, B- Bovine, C- Chicken, D- Dog, Mk- Monkey, P- Pig, Rb- Rabbit, S- Sheep, Z- Zebrafish

### COHESION BIOSCIENCES LIMITED

**WEB**  
[www.cohesionbio.com](http://www.cohesionbio.com)

**ORDER**  
[order@cohesionbio.com](mailto:order@cohesionbio.com)

**SUPPORT**  
[techsupport@cohesionbio.com](mailto:techsupport@cohesionbio.com)

**CUSTOM**  
[custom@cohesionbio.com](mailto:custom@cohesionbio.com)