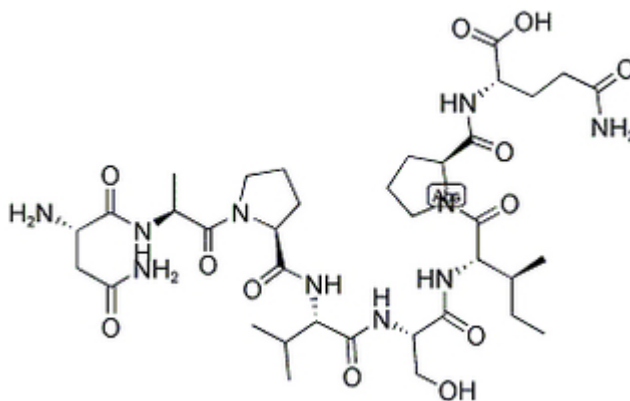


NAP

| Catalog # | Source | Reactivity | Applications |
|-----------|-----------|------------|--------------|
| CCP1329 | Synthetic | | |

| | |
|-------------------------------|---|
| Description | Peptide to NAP |
| Biological Description | |
| Form | Lyophilized powder |
| CAS Number | 211439-12-2 |
| Molecular Formula | C ₃₆ H ₆₀ N ₁₀ O ₁₂ |
| Molecular Weight | 824.94 |
| Purity | > 95% |
| Chemical Structure | H - Asn - Ala - Pro - Val - Ser - Ile - Pro - Gln - OH |
| Storage/Stability | Shipped at 4°C. Store at -20°C for one year. |

Structure



Application key: E- ELISA, WB- Western blot, IH- Immunohistochemistry, IF- Immunofluorescence, FC- Flow cytometry, IC- Immunocytochemistry, IP- Immunoprecipitation, ChIP- Chromatin Immunoprecipitation, EMSA- Electrophoretic Mobility Shift Assay, SE- Sandwich ELISA, CBE- Cell-based ELISA, RNAi- RNA interference

Species reactivity key: H- Human, M- Mouse, R- Rat, B- Bovine, C- Chicken, D- Dog, Mk- Monkey, P- Pig, Rb- Rabbit, S- Sheep, Z- Zebrafish

COHESION BIOSCIENCES LIMITED

WEB
www.cohesionbio.com

ORDER
order@cohesionbio.com

SUPPORT
techsupport@cohesionbio.com

CUSTOM
custom@cohesionbio.com