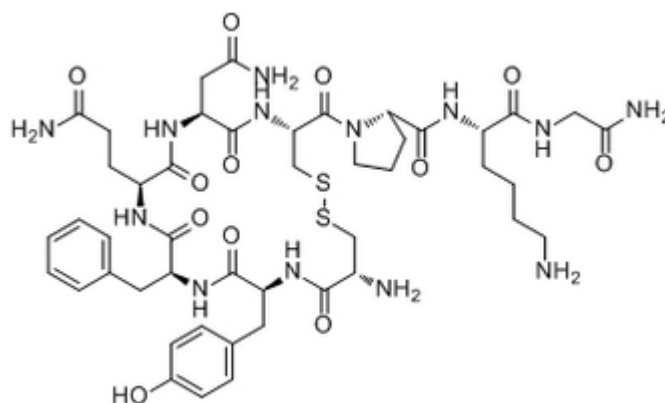


Lysipressin Acetate

Catalog #	Source	Reactivity	Applications
CCP1295	Synthetic		
Description	Peptide to Lysipressin Acetate		
Biological Description	A compound with reduced vasopressor and antidiuretic activity, as compared to AVP.		
Form	Lyophilized powder		
CAS Number	50-57-7		
Molecular Formula	C ₄₆ H ₆₅ N ₁₃ O ₁₂ S ₂		
Molecular Weight	1056.22		
Purity	> 95%		
Chemical Structure	C[Cys - Tyr - Phe - Gln - Asn - Cys] - Pro - Lys - Gly - NH ₂		
Storage/Stability	Shipped at 4°C. Store at -20°C for one year.		

Structure



Application key: E- ELISA, WB- Western blot, IH- Immunohistochemistry, IF- Immunofluorescence, FC- Flow cytometry, IC- Immunocytochemistry, IP- Immunoprecipitation, CHIP- Chromatin Immunoprecipitation, EMSA- Electrophoretic Mobility Shift Assay, SE- Sandwich ELISA, CBE- Cell-based ELISA, RNAi- RNA interference

Species reactivity key: H- Human, M- Mouse, R- Rat, B- Bovine, C- Chicken, D- Dog, Mk- Monkey, P- Pig, Rb- Rabbit, S- Sheep, Z- Zebrafish

COHESION BIOSCIENCES LIMITED

WEB
www.cohesionbio.com

ORDER
order@cohesionbio.com

SUPPORT
techsupport@cohesionbio.com

CUSTOM
custom@cohesionbio.com