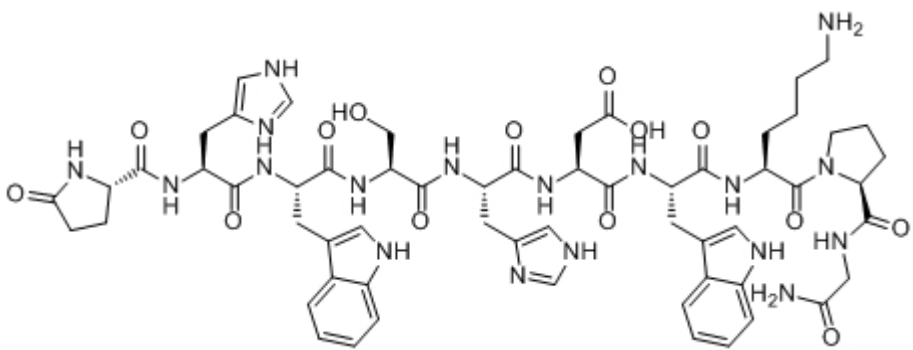
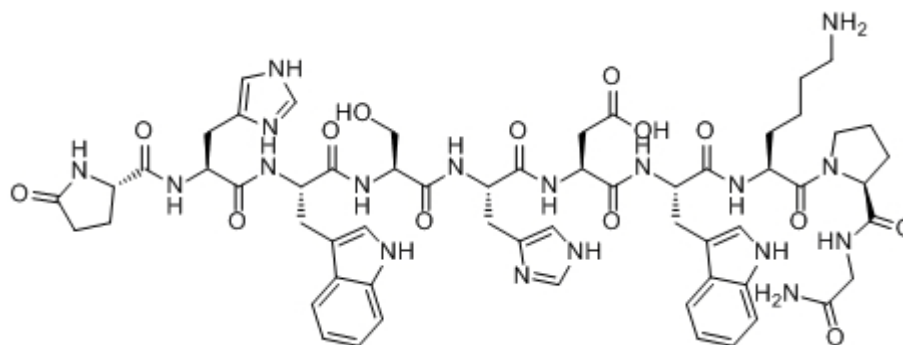


LHRH-III, lamprey

Catalog #	Source	Reactivity	Applications
CCP1291	Synthetic		
Description	Peptide to LHRH-III, lamprey		
Biological Description	Lamprey GnRH (also called peforelin) is a highly potent and specific FSH-releasing peptide that may enhance fertility in animals and humans. The peptide has found application in stimulating FSH release in swine. Peforelin surpasses GnRH in suppressing the		
Form	Lyophilized powder		
CAS Number	147859-97-0		
Molecular Formula	C59H75N18O14		
Molecular Weight	1259.4		
Purity	> 95%		
Chemical Structure	pGlu - His - Trp - Ser - His - Asp - Trp - Lys - Pro - Gly - NH ₂		
Storage/Stability	Shipped at 4°C. Store at -20°C for one year.		
Structure			



Application key: E- ELISA, WB- Western blot, IH- Immunohistochemistry, IF- Immunofluorescence, FC- Flow cytometry, IC- Immunocytochemistry, IP- Immunoprecipitation, ChIP- Chromatin Immunoprecipitation, EMSA- Electrophoretic Mobility Shift Assay, SE- Sandwich ELISA, CBE- Cell-based ELISA, RNAi- RNA interference

Species reactivity key: H- Human, M- Mouse, R- Rat, B- Bovine, C- Chicken, D- Dog, Mk- Monkey, P- Pig, Rb- Rabbit, S- Sheep, Z- Zebrafish

COHESION BIOSCIENCES LIMITED

WEB
www.cohesionbio.com

ORDER
order@cohesionbio.com

SUPPORT
techsupport@cohesionbio.com

CUSTOM
custom@cohesionbio.com