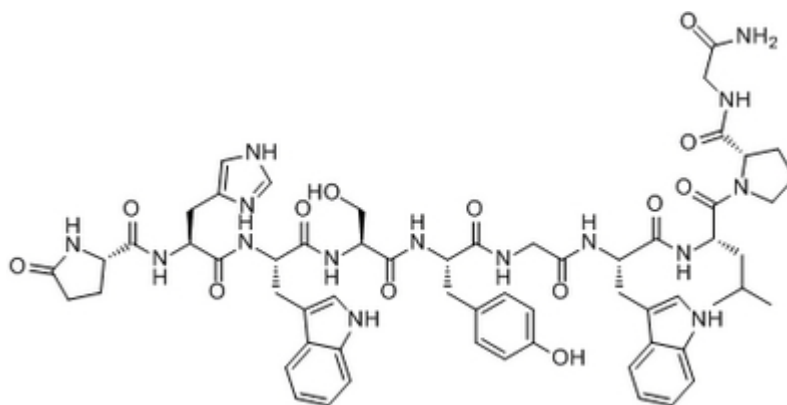


## LH-RH, Salmon

Catalog #	Source	Reactivity	Applications
CCP1290	Synthetic		
<b>Description</b>	Peptide to LH-RH, Salmon		
<b>Biological Description</b>	Salmon GnRH showed a twofold greater affinity for the placental GnRH receptor than its mammalian analog.		
<b>Form</b>	Lyophilized powder		
<b>CAS Number</b>	86073-88-3		
<b>Molecular Formula</b>	C60H73N15O13		
<b>Molecular Weight</b>	1212.36		
<b>Purity</b>	> 95%		
<b>Chemical Structure</b>	pGlu - His - Trp - Ser - Tyr - Gly - Trp - Leu - Pro - Gly - NH <sub>2</sub>		
<b>Storage/Stability</b>	Shipped at 4°C. Store at -20°C for one year.		
<b>Structure</b>			



**Application key:** E- ELISA, WB- Western blot, IH- Immunohistochemistry, IF- Immunofluorescence, FC- Flow cytometry, IC- Immunocytochemistry, IP- Immunoprecipitation, ChIP- Chromatin Immunoprecipitation, EMSA- Electrophoretic Mobility Shift Assay, SE- Sandwich ELISA, CBE- Cell-based ELISA, RNAi- RNA interference

**Species reactivity key:** H- Human, M- Mouse, R- Rat, B- Bovine, C- Chicken, D- Dog, Mk- Monkey, P- Pig, Rb- Rabbit, S- Sheep, Z- Zebrafish

### COHESION BIOSCIENCES LIMITED

**WEB**  
[www.cohesionbio.com](http://www.cohesionbio.com)

**ORDER**  
[order@cohesionbio.com](mailto:order@cohesionbio.com)

**SUPPORT**  
[techsupport@cohesionbio.com](mailto:techsupport@cohesionbio.com)

**CUSTOM**  
[custom@cohesionbio.com](mailto:custom@cohesionbio.com)