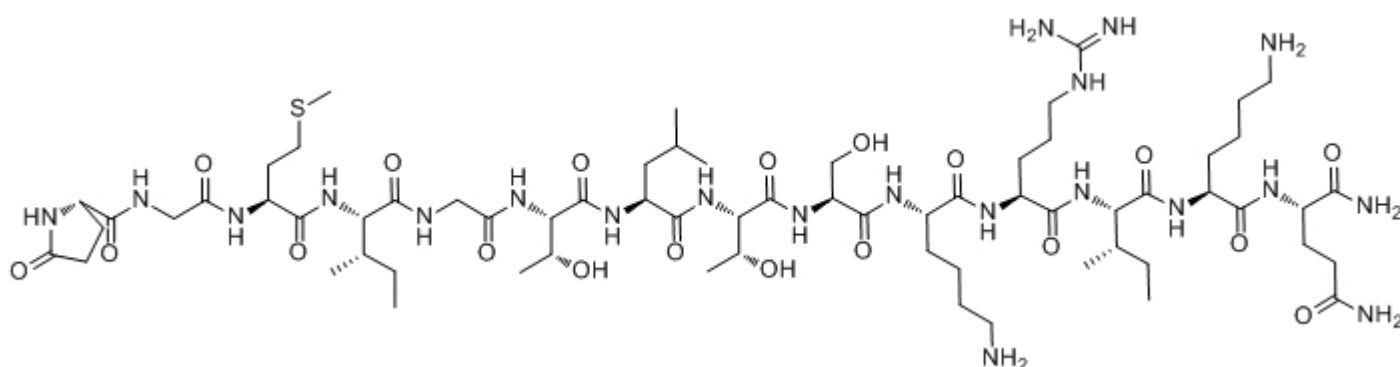


Levitide

Catalog #	Source	Reactivity	Applications
CCP1288	Synthetic		
Description	Peptide to Levitide		
Biological Description	Levitide has been isolated from skin secretions of the South African frog <i>Xenopus laevis</i> . The pyroglutamic acid residue at the NH ₂ -terminus and the COOH-terminal amide group suggest that levitide may be a neuropeptide or a neuropeptide analog.		
Form	Lyophilized powder		
CAS Number	114281-19-5		
Molecular Formula	C ₆₆ H ₁₁₉ N ₂₁ O ₁₉ S		
Molecular Weight	1542.88		
Purity	> 95%		
Chemical Structure	pGlu - Gly - Met - Ile - Gly - Thr - Leu - Thr - Ser - Lys - Arg - Ile - Lys - Gln - NH ₂		
Storage/Stability	Shipped at 4°C. Store at -20°C for one year.		

Structure



Application key: E- ELISA, WB- Western blot, IH- Immunohistochemistry, IF- Immunofluorescence, FC- Flow cytometry, IC- Immunocytochemistry, IP- Immunoprecipitation, ChIP- Chromatin Immunoprecipitation, EMSA- Electrophoretic Mobility Shift Assay, SE- Sandwich ELISA, CBE- Cell-based ELISA, RNAi- RNA interference

Species reactivity key: H- Human, M- Mouse, R- Rat, B- Bovine, C- Chicken, D- Dog, Mk- Monkey, P- Pig, Rb- Rabbit, S- Sheep, Z- Zebrafish

COHESION BIOSCIENCES LIMITED

WEB
www.cohesionbio.com

ORDER
order@cohesionbio.com

SUPPORT
techsupport@cohesionbio.com

CUSTOM
custom@cohesionbio.com