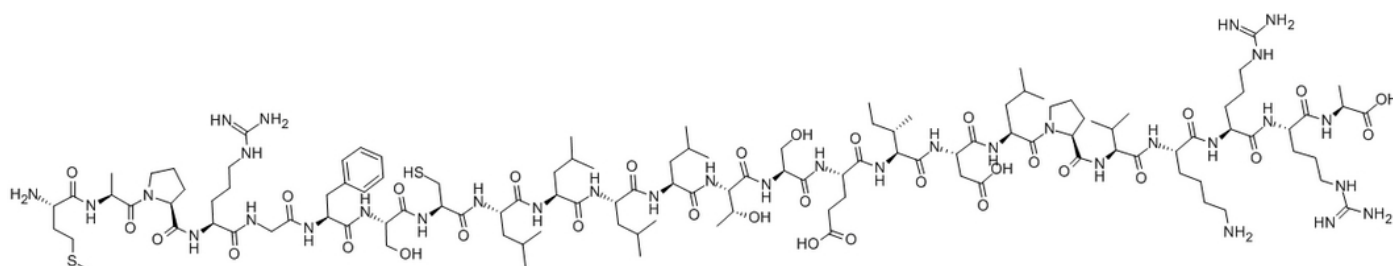


Humanin, Human

Catalog #	Source	Reactivity	Applications
CCP1268	Synthetic		
Description	Peptide to Humanin, Human		
Biological Description	Humanin (HN) is a polypeptide suppressing neuronal cell death induced by several familial Alzheimer's disease genes and by amyloid β -protein (1-43) (human). It has been shown that amyloid β -protein (1-40) and amyloid β -protein (1-42) secretion is not affected.		
Form	Lyophilized powder		
CAS Number	330936-69-1		
Molecular Formula	C121H205F3N34O34S2		
Molecular Weight	2687.23		
Purity	> 95%		
Chemical Structure	Met - Ala - Pro - Arg - Gly - Phe - Ser - Cys - Leu - Leu - Leu - Leu - Thr - Ser - Glu - Ile - Asp - Leu - Pro - Val - Lys - Arg - Arg - Ala		
Storage/Stability	Shipped at 4°C. Store at -20°C for one year.		

Structure



Application key: E- ELISA, WB- Western blot, IH- Immunohistochemistry, IF- Immunofluorescence, FC- Flow cytometry, IC- Immunocytochemistry, IP- Immunoprecipitation, ChIP- Chromatin Immunoprecipitation, EMSA- Electrophoretic Mobility Shift Assay, SE- Sandwich ELISA, CBE- Cell-based ELISA, RNAi- RNA interference

Species reactivity key: H- Human, M- Mouse, R- Rat, B- Bovine, C- Chicken, D- Dog, Mk- Monkey, P- Pig, Rb- Rabbit, S- Sheep, Z- Zebrafish

COHESION BIOSCIENCES LIMITED

WEB
www.cohesionbio.com

ORDER
order@cohesionbio.com

SUPPORT
techsupport@cohesionbio.com

CUSTOM
custom@cohesionbio.com