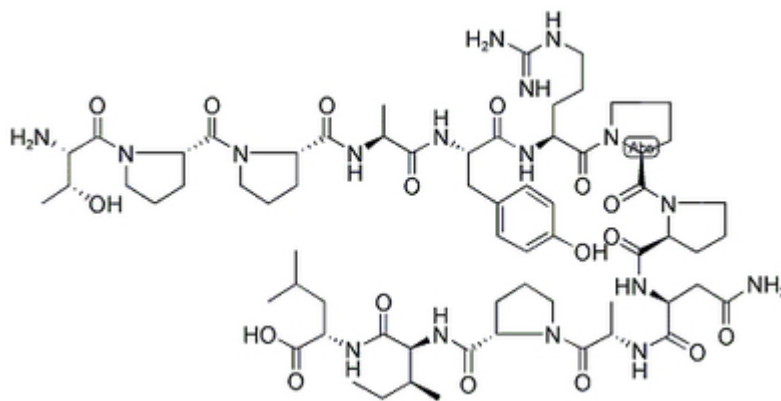


HBV core protein (128-140)

Catalog #	Source	Reactivity	Applications
CCP1252	Synthetic		

Description	Peptide to HBV core protein (128-140)
Biological Description	
Form	Lyophilized powder
CAS Number	
Molecular Formula	C ₆₆ H ₁₀₃ N ₁₇ O ₁₇
Molecular Weight	1406.64
Purity	> 95%
Chemical Structure	H - Thr - Pro - Pro - Ala - Tyr - Arg - Pro - Pro - Asn - Ala - Pro - Ile - Leu - OH
Storage/Stability	Shipped at 4°C. Store at -20°C for one year.

Structure



Application key: E- ELISA, WB- Western blot, IH- Immunohistochemistry, IF- Immunofluorescence, FC- Flow cytometry, IC- Immunocytochemistry, IP- Immunoprecipitation, CHIP- Chromatin Immunoprecipitation, EMSA- Electrophoretic Mobility Shift Assay, SE- Sandwich ELISA, CBE- Cell-based ELISA, RNAi- RNA interference

Species reactivity key: H- Human, M- Mouse, R- Rat, B- Bovine, C- Chicken, D- Dog, Mk- Monkey, P- Pig, Rb- Rabbit, S- Sheep, Z- Zebrafish

COHESION BIOSCIENCES LIMITED

WEB
www.cohesionbio.com

ORDER
order@cohesionbio.com

SUPPORT
techsupport@cohesionbio.com

CUSTOM
custom@cohesionbio.com