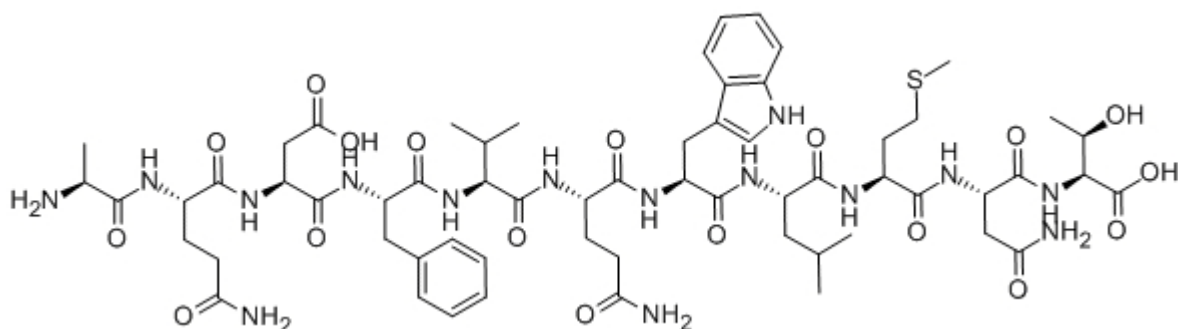


Glucagon (19-29), Human

Catalog #	Source	Reactivity	Applications
CCP1242	Synthetic		
Description	Peptide to Glucagon (19-29), Human		
Biological Description	This glucagon fragment inhibited both the Ca ²⁺ activated and Mg ²⁺ dependent ATPase activity and Ca ²⁺ transport in liver plasma membranes with an efficiency 1000-fold higher than that of glucagon. It is likely to be the active peptide involved in the inhib		
Form	Lyophilized powder		
CAS Number	64790-15-4		
Molecular Formula	C61H89N15O18S		
Molecular Weight	1352.54		
Purity	> 95%		
Chemical Structure	H - Ala - Gln - Asp - Phe - Val - Gln - Trp - Leu - Met - Asn - Thr - OH		
Storage/Stability	Shipped at 4°C. Store at -20°C for one year.		

Structure



Application key: E- ELISA, WB- Western blot, IH- Immunohistochemistry, IF- Immunofluorescence, FC- Flow cytometry, IC- Immunocytochemistry, IP- Immunoprecipitation, CHIP- Chromatin Immunoprecipitation, EMSA- Electrophoretic Mobility Shift Assay, SE- Sandwich ELISA, CBE- Cell-based ELISA, RNAi- RNA interference

Species reactivity key: H- Human, M- Mouse, R- Rat, B- Bovine, C- Chicken, D- Dog, Mk- Monkey, P- Pig, Rb- Rabbit, S- Sheep, Z- Zebrafish

COHESION BIOSCIENCES LIMITED

WEB
www.cohesionbio.com

ORDER
order@cohesionbio.com

SUPPORT
techsupport@cohesionbio.com

CUSTOM
custom@cohesionbio.com