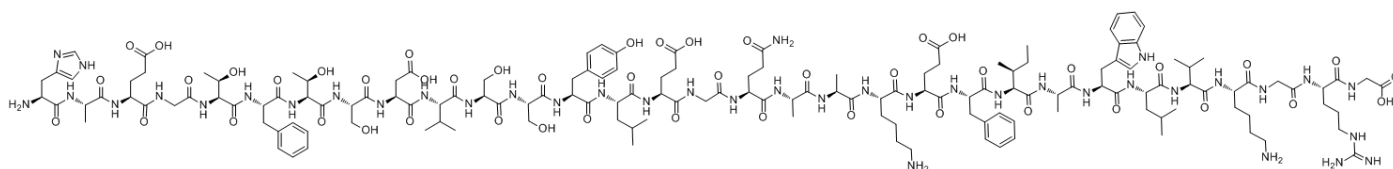


GLP-1 (7-37), Human, Mouse, Rat, Bovine, Guinea Pig

Catalog #	Source	Reactivity	Applications
CCP1239	Synthetic		
Description	Peptide to GLP-1 (7-37), Human, Mouse, Rat, Bovine, Guinea Pig		
Biological Description	An insulinotropic peptide generated by proteolytic cleavage of its precursor GLP-1 (1-37) and secreted by L cells of the intestinal mucosa upon food ingestion.		
Form	Lyophilized powder		
CAS Number	106612-94-6		
Molecular Formula	C151H228N40O47		
Molecular Weight	3355.67		
Purity	> 95%		
Chemical Structure	H - His - Ala - Glu - Gly - Thr - Phe - Thr - Ser - Asp - Val - Ser - Ser - Tyr - Leu - Glu - Gly - Gln - Ala - Ala - Lys - Glu - Phe - Ile - Ala - Trp - Leu - Val - Lys - Gly - Arg - Gly - OH		
Storage/Stability	Shipped at 4°C. Store at -20°C for one year.		

Structure



Application key: E- ELISA, WB- Western blot, IH- Immunohistochemistry, IF- Immunofluorescence, FC- Flow cytometry, IC- Immunocytochemistry, IP- Immunoprecipitation, ChIP- Chromatin Immunoprecipitation, EMSA- Electrophoretic Mobility Shift Assay, SE- Sandwich ELISA, CBE- Cell-based ELISA, RNAi- RNA interference

Species reactivity key: H- Human, M- Mouse, R- Rat, B- Bovine, C- Chicken, D- Dog, Mk- Monkey, P- Pig, Rb- Rabbit, S- Sheep, Z- Zebrafish

COHESION BIOSCIENCES LIMITED

WEB
www.cohesionbio.com

ORDER
order@cohesionbio.com

SUPPORT
techsupport@cohesionbio.com

CUSTOM
custom@cohesionbio.com