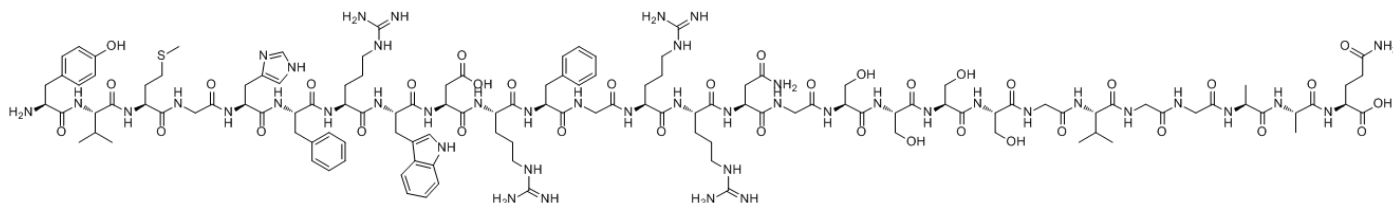


Gamma3-MSH

Catalog #	Source	Reactivity	Applications
CCP1219	Synthetic		
Description	Peptide to Gamma3-MSH		
Biological Description	Pro-opiomelanocortin (POMC) derived peptide. Potentiates steroidogenic response to adrenocorticotrophic hormone.		
Form	Lyophilized powder		
CAS Number	72629-64-2		
Molecular Formula	C126H188N44O37S		
Molecular Weight	2943.2		
Purity	> 95%		
Chemical Structure	Tyr - Val - Met - Gly - His - Phe - Arg - Trp - Asp - Arg - Phe - Gly - Arg - Arg - Asn - Gly - Ser - Ser - Ser - Ser - Gly - Val - Gly - Gly - Ala - Ala - Gln		
Storage/Stability	Shipped at 4°C. Store at -20°C for one year.		

Structure



Application key: E- ELISA, WB- Western blot, IH- Immunohistochemistry, IF- Immunofluorescence, FC- Flow cytometry, IC- Immunocytochemistry, IP- Immunoprecipitation, ChIP- Chromatin Immunoprecipitation, EMSA- Electrophoretic Mobility Shift Assay, SE- Sandwich ELISA, CBE- Cell-based ELISA, RNAi- RNA interference

Species reactivity key: H- Human, M- Mouse, R- Rat, B- Bovine, C- Chicken, D- Dog, Mk- Monkey, P- Pig, Rb- Rabbit, S- Sheep, Z- Zebrafish

COHESION BIOSCIENCES LIMITED

WEB
www.cohesionbio.com

ORDER
order@cohesionbio.com

SUPPORT
techsupport@cohesionbio.com

CUSTOM
custom@cohesionbio.com