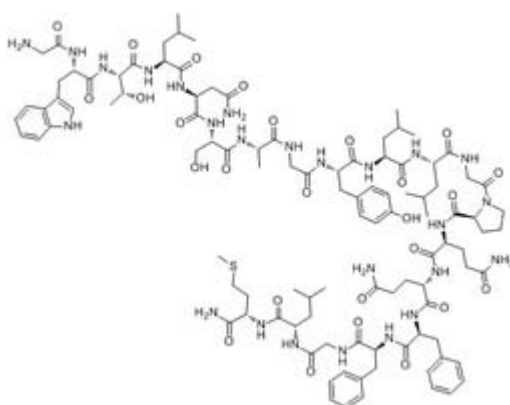


Galantide

Catalog #	Source	Reactivity	Applications
CCP1217	Synthetic		

Description	Peptide to Galantide
Biological Description	The chimaeric peptide galantide is a high-affinity ligand for galanin receptors in membranes from rat hypothalamus, hippocampus, and spinal cord. There it reversibly blocks the neuronal actions of galanin in a dose-dependent manner. The peptide also rever
Form	Lyophilized powder
CAS Number	138579-66-5
Molecular Formula	C104H151N25O26S
Molecular Weight	2199.58
Purity	> 95%
Chemical Structure	H - Gly - Trp - Thr - Leu - Asn - Ser - Ala - Gly - Tyr - Leu - Leu - Gly - Pro - Gln - Gln - Phe - Phe - Gly - Leu - Met - NH ₂
Storage/Stability	Shipped at 4°C. Store at -20°C for one year.

Structure



Application key: E- ELISA, WB- Western blot, IH- Immunohistochemistry, IF- Immunofluorescence, FC- Flow cytometry, IC- Immunocytochemistry, IP- Immunoprecipitation, CHIP- Chromatin Immunoprecipitation, EMSA- Electrophoretic Mobility Shift Assay, SE- Sandwich ELISA, CBE- Cell-based ELISA, RNAi- RNA interference

Species reactivity key: H- Human, M- Mouse, R- Rat, B- Bovine, C- Chicken, D- Dog, Mk- Monkey, P- Pig, Rb- Rabbit, S- Sheep, Z- Zebrafish

COHESION BIOSCIENCES LIMITED

WEB
www.cohesionbio.com

ORDER
order@cohesionbio.com

SUPPORT
techsupport@cohesionbio.com

CUSTOM
custom@cohesionbio.com

Product Data Sheet

Application key: E- ELISA, WB- Western blot, IH- Immunohistochemistry, IF- Immunofluorescence, FC- Flow cytometry, IC- Immunocytochemistry, IP- Immunoprecipitation, CHIP- Chromatin Immunoprecipitation, EMSA- Electrophoretic Mobility Shift Assay, SE- Sandwich ELISA, CBE- Cell-based ELISA, RNAi- RNA interference

Species reactivity key: H- Human, M- Mouse, R- Rat, B- Bovine, C- Chicken, D- Dog, Mk- Monkey, P- Pig, Rb- Rabbit, S- Sheep, Z- Zebrafish

COHESION BIOSCIENCES LIMITED

WEB

www.cohesionbio.com

ORDER

order@cohesionbio.com

SUPPORT

techsupport@cohesionbio.com

CUSTOM

custom@cohesionbio.com