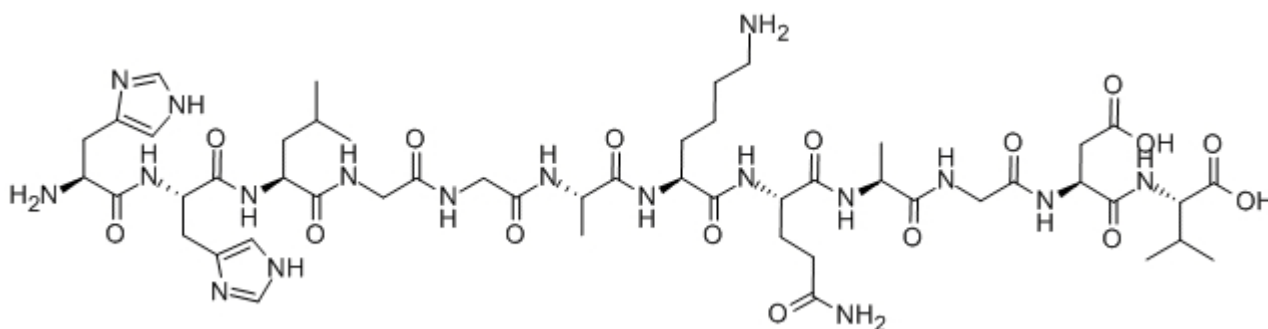


Fibrinogen γ -chain dodecapeptide

Catalog #	Source	Reactivity	Applications
CCP1202	Synthetic		
Description	Peptide to Fibrinogen γ -chain dodecapeptide		
Biological Description	The synthetic dodecapeptide HHLGGAKQAGDV represents the specific platelet receptor recognition site of the human fibrinogen γ chain (residues 400-411). It is a potent inhibitor of the binding of fibrinogen, fibronectin, and von Willebrand factor to thromb		
Form	Lyophilized powder		
CAS Number	89105-94-2		
Molecular Formula	C50H80N18O16		
Molecular Weight	1189.29		
Purity	> 95%		
Chemical Structure	His - His - Leu - Gly - Gly - Ala - Lys - Gln - Ala - Gly - Asp - Val		
Storage/Stability	Shipped at 4°C. Store at -20°C for one year.		

Structure



Application key: E- ELISA, WB- Western blot, IH- Immunohistochemistry, IF- Immunofluorescence, FC- Flow cytometry, IC- Immunocytochemistry, IP- Immunoprecipitation, CHIP- Chromatin Immunoprecipitation, EMSA- Electrophoretic Mobility Shift Assay, SE- Sandwich ELISA, CBE- Cell-based ELISA, RNAi- RNA interference

Species reactivity key: H- Human, M- Mouse, R- Rat, B- Bovine, C- Chicken, D- Dog, Mk- Monkey, P- Pig, Rb- Rabbit, S- Sheep, Z- Zebrafish

COHESION BIOSCIENCES LIMITED

WEB
www.cohesionbio.com

ORDER
order@cohesionbio.com

SUPPORT
techsupport@cohesionbio.com

CUSTOM
custom@cohesionbio.com