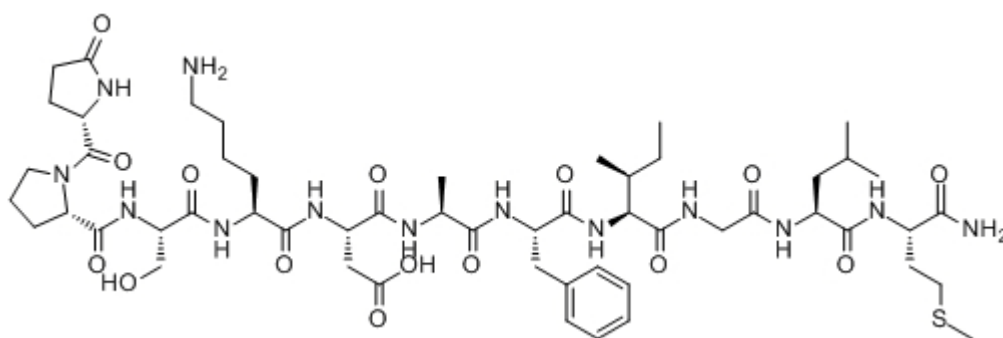


Eledoisin

Catalog #	Source	Reactivity	Applications
CCP1185	Synthetic		
Description	Peptide to Eledoisin		
Biological Description	<p>Potent natural tachykinin and neurokinin A receptor ligand. (pD2 values are 9.21, 8.22 and 7.11 for guinea pig NK1, rabbit NK2 and rat NK3 receptors respectively).</p> <p>Potent vasodilating peptide that increases vascular permeability.</p>		
Form	Lyophilized powder		
CAS Number	69-25-0		
Molecular Formula	C54H85N13O15S		
Molecular Weight	1188.44		
Purity	> 95%		
Chemical Structure	pGlu - Pro - Ser - Lys - Asp - Ala - Phe - Ile - Gly - Leu - Met - NH ₂		
Storage/Stability	Shipped at 4°C. Store at -20°C for one year.		

Structure



Application key: E- ELISA, WB- Western blot, IH- Immunohistochemistry, IF- Immunofluorescence, FC- Flow cytometry, IC- Immunocytochemistry, IP- Immunoprecipitation, CHIP- Chromatin Immunoprecipitation, EMSA- Electrophoretic Mobility Shift Assay, SE- Sandwich ELISA, CBE- Cell-based ELISA, RNAi- RNA interference

Species reactivity key: H- Human, M- Mouse, R- Rat, B- Bovine, C- Chicken, D- Dog, Mk- Monkey, P- Pig, Rb- Rabbit, S- Sheep, Z- Zebrafish

COHESION BIOSCIENCES LIMITED

WEB
www.cohesionbio.com

ORDER
order@cohesionbio.com

SUPPORT
techsupport@cohesionbio.com

CUSTOM
custom@cohesionbio.com