

**D-D-D-D-D-D**

Catalog #	Source	Reactivity	Applications
CCP1173	Synthetic		

**Description** Peptide to D-D-D-D-D-D

**Biological Description**

**Form** Lyophilized powder

**CAS Number** 145224-96-0

**Molecular Formula** C<sub>24</sub>H<sub>32</sub>N<sub>6</sub>O<sub>19</sub>

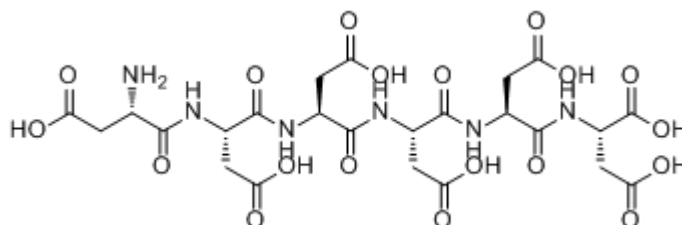
**Molecular Weight** 708.55

**Purity** > 95%

**Chemical Structure** H - Asp - Asp - Asp - Asp - Asp - Asp - OH

**Storage/Stability** Shipped at 4°C. Store at -20°C for one year.

**Structure**



**Application key:** E- ELISA, WB- Western blot, IH- Immunohistochemistry, IF- Immunofluorescence, FC- Flow cytometry, IC- Immunocytochemistry, IP- Immunoprecipitation, CHIP- Chromatin Immunoprecipitation, EMSA- Electrophoretic Mobility Shift Assay, SE- Sandwich ELISA, CBE- Cell-based ELISA, RNAi- RNA interference

**Species reactivity key:** H- Human, M- Mouse, R- Rat, B- Bovine, C- Chicken, D- Dog, Mk- Monkey, P- Pig, Rb- Rabbit, S- Sheep, Z- Zebrafish

**COHESION BIOSCIENCES LIMITED**

**WEB**  
[www.cohesionbio.com](http://www.cohesionbio.com)

**ORDER**  
[order@cohesionbio.com](mailto:order@cohesionbio.com)

**SUPPORT**  
[techsupport@cohesionbio.com](mailto:techsupport@cohesionbio.com)

**CUSTOM**  
[custom@cohesionbio.com](mailto:custom@cohesionbio.com)