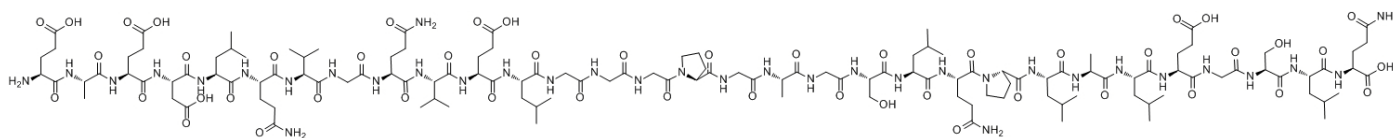


## C-Peptide, Human

Catalog #	Source	Reactivity	Applications
CCP1163	Synthetic		
<b>Description</b>	Peptide to C-Peptide, Human		
<b>Biological Description</b>	<p>The measurement of the C-peptide under standardized conditions provides a sensitive, well accepted, and clinically validated assessment of <math>\beta</math>-cell function. The C-peptide measurement is the most suitable primary outcome for clinical trials of therapies aim</p>		
<b>Form</b>	Lyophilized powder		
<b>CAS Number</b>	33017-11-7		
<b>Molecular Formula</b>	C129H211N35O48		
<b>Molecular Weight</b>	3020.33		
<b>Purity</b>	> 95%		
<b>Chemical Structure</b>	<p>H - Glu - Ala - Glu - Asp - Leu - Gln - Val - Gly - Gln - Val - Glu - Leu - Gly - Gly - Gly - Pro - Gly - Ala - Gly - Ser - Leu - Gln - Pro - Leu - Ala - Leu - Glu - Gly - Ser - Leu - Gln - OH</p>		
<b>Storage/Stability</b>	Shipped at 4°C. Store at -20°C for one year.		

### Structure



**Application key:** E- ELISA, WB- Western blot, IH- Immunohistochemistry, IF- Immunofluorescence, FC- Flow cytometry, IC- Immunocytochemistry, IP- Immunoprecipitation, CHIP- Chromatin Immunoprecipitation, EMSA- Electrophoretic Mobility Shift Assay, SE- Sandwich ELISA, CBE- Cell-based ELISA, RNAi- RNA interference

**Species reactivity key:** H- Human, M- Mouse, R- Rat, B- Bovine, C- Chicken, D- Dog, Mk- Monkey, P- Pig, Rb- Rabbit, S- Sheep, Z- Zebrafish

### COHESION BIOSCIENCES LIMITED

**WEB**  
www.cohesionbio.com

**ORDER**  
order@cohesionbio.com

**SUPPORT**  
techsupport@cohesionbio.com

**CUSTOM**  
custom@cohesionbio.com