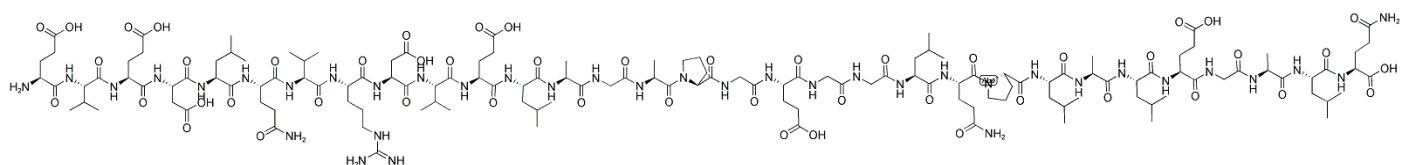


## C-Peptide, Dog

Catalog #	Source	Reactivity	Applications
CCP1162	Synthetic		
<b>Description</b>	Peptide to C-Peptide, Dog		
<b>Biological Description</b>			
<b>Form</b>	Lyophilized powder		
<b>CAS Number</b>	39016-05-2		
<b>Molecular Formula</b>	C137H225N37O49		
<b>Molecular Weight</b>	3174.54		
<b>Purity</b>	> 95%		
<b>Chemical Structure</b>	H - Glu - Val - Glu - Asp - Leu - Gln - Val - Arg - Asp - Val - Glu - Leu - Ala - Gly - Ala - Pro - Gly - Glu - Gly - Gly - Leu - Gln - Pro - Leu - Ala - Leu - Glu - Gly - Ala - Leu - Gln - OH		
<b>Storage/Stability</b>	Shipped at 4°C. Store at -20°C for one year.		

### Structure



**Application key:** E- ELISA, WB- Western blot, IH- Immunohistochemistry, IF- Immunofluorescence, FC- Flow cytometry, IC- Immunocytochemistry, IP- Immunoprecipitation, ChIP- Chromatin Immunoprecipitation, EMSA- Electrophoretic Mobility Shift Assay, SE- Sandwich ELISA, CBE- Cell-based ELISA, RNAi- RNA interference

**Species reactivity key:** H- Human, M- Mouse, R- Rat, B- Bovine, C- Chicken, D- Dog, Mk- Monkey, P- Pig, Rb- Rabbit, S- Sheep, Z- Zebrafish

### COHESION BIOSCIENCES LIMITED

**WEB**  
www.cohesionbio.com

**ORDER**  
order@cohesionbio.com

**SUPPORT**  
techsupport@cohesionbio.com

**CUSTOM**  
custom@cohesionbio.com