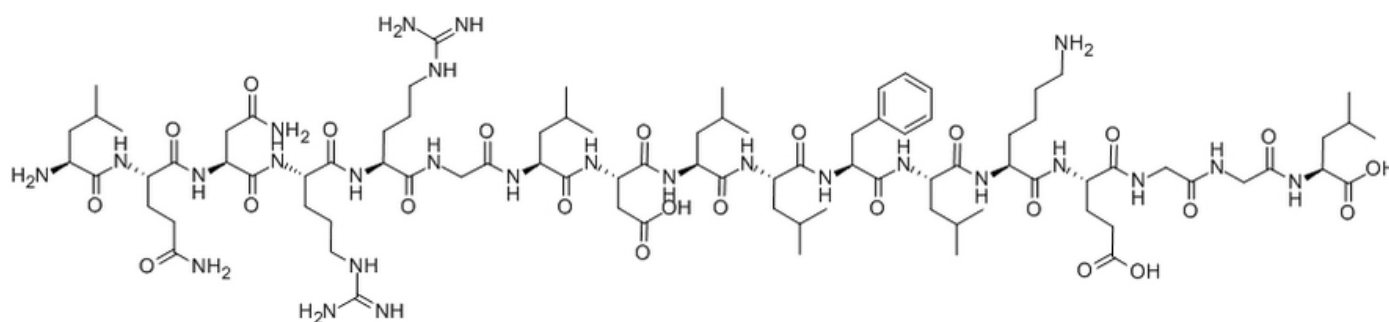


CKS-17

Catalog #	Source	Reactivity	Applications
CCP1155	Synthetic		
Description	Peptide to CKS-17		
Biological Description	LQNRRLDLLFLKEGGL corresponds to a highly conserved region of the immunosuppressive retroviral envelope protein p15E. CKS-17 has been shown to inhibit lymphocyte proliferation, B cell activation, natural killer cell cytotoxicity, and monocyte-mediated tum		
Form	Lyophilized powder		
CAS Number	99273-04-8		
Molecular Formula	C87H148N26O24		
Molecular Weight	1942.31		
Purity	> 95%		
Chemical Structure	H - Leu - Gln - Asn - Arg - Arg - Gly - Leu - Asp - Leu - Leu - Phe - Leu - Lys - Glu - Gly - Gly - Leu - OH		
Storage/Stability	Shipped at 4°C. Store at -20°C for one year.		

Structure



Application key: E- ELISA, WB- Western blot, IH- Immunohistochemistry, IF- Immunofluorescence, FC- Flow cytometry, IC- Immunocytochemistry, IP- Immunoprecipitation, CHIP- Chromatin Immunoprecipitation, EMSA- Electrophoretic Mobility Shift Assay, SE- Sandwich ELISA, CBE- Cell-based ELISA, RNAi- RNA interference

Species reactivity key: H- Human, M- Mouse, R- Rat, B- Bovine, C- Chicken, D- Dog, Mk- Monkey, P- Pig, Rb- Rabbit, S- Sheep, Z- Zebrafish

COHESION BIOSCIENCES LIMITED

WEB
www.cohesionbio.com

ORDER
order@cohesionbio.com

SUPPORT
techsupport@cohesionbio.com

CUSTOM
custom@cohesionbio.com