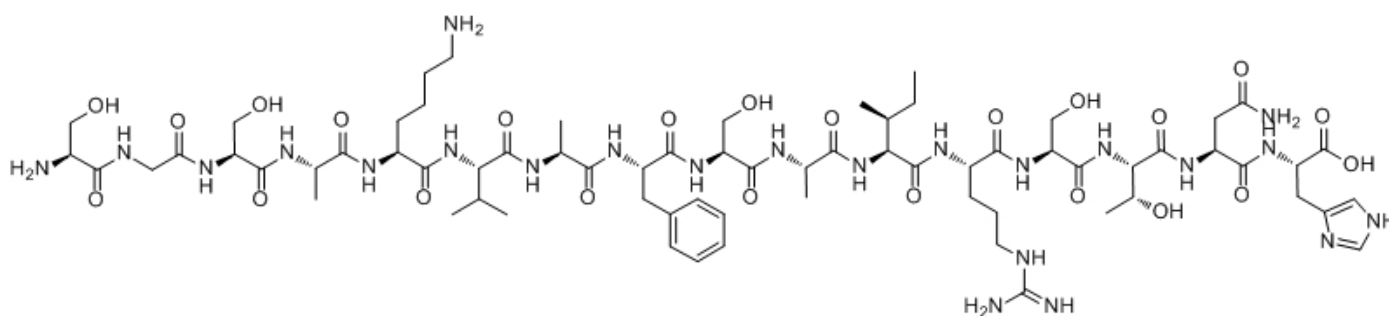


Cerebellin

Catalog #	Source	Reactivity	Applications
CCP1153	Synthetic		
Description	Peptide to Cerebellin		
Biological Description	Cerebellum peptide. Purkinje cell marker. Modulates synaptic structure formation in the CNS and regulates catecholamine secretion in the peripheral tissues. Insulinostatic factor, decreases intracellular cAMP production and calcium in vitro.		
Form	Lyophilized powder		
CAS Number	94071-26-8		
Molecular Formula	C69H113N23O23		
Molecular Weight	1632.81		
Purity	> 95%		
Chemical Structure	H - Ser - Gly - Ser - Ala - Lys - Val - Ala - Phe - Ser - Ala - Ile - Arg - Ser - Thr - Asn - His - OH		
Storage/Stability	Shipped at 4°C. Store at -20°C for one year.		

Structure



Application key: E- ELISA, WB- Western blot, IH- Immunohistochemistry, IF- Immunofluorescence, FC- Flow cytometry, IC- Immunocytochemistry, IP- Immunoprecipitation, CHIP- Chromatin Immunoprecipitation, EMSA- Electrophoretic Mobility Shift Assay, SE- Sandwich ELISA, CBE- Cell-based ELISA, RNAi- RNA interference

Species reactivity key: H- Human, M- Mouse, R- Rat, B- Bovine, C- Chicken, D- Dog, Mk- Monkey, P- Pig, Rb- Rabbit, S- Sheep, Z- Zebrafish

COHESION BIOSCIENCES LIMITED

WEB
www.cohesionbio.com

ORDER
order@cohesionbio.com

SUPPORT
techsupport@cohesionbio.com

CUSTOM
custom@cohesionbio.com