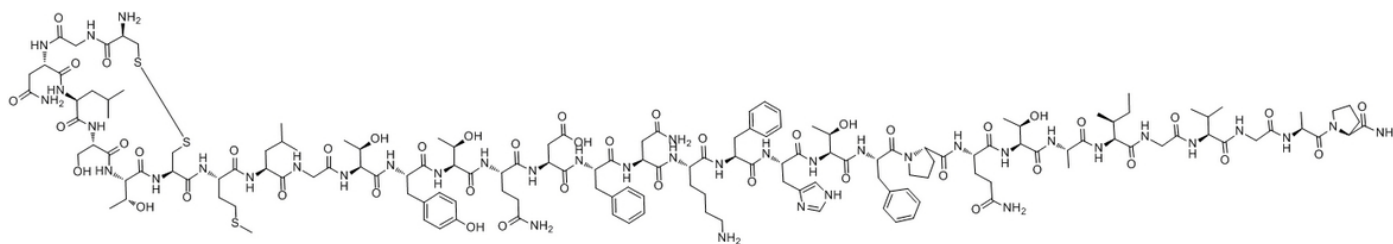


Calcitonin, Human

Catalog #	Source	Reactivity	Applications
CCP1138	Synthetic		
Description	Peptide to Calcitonin, Human		
Biological Description	Calcitonin is a peptide hormone involved in calcium and phosphorus homeostasis. Its inhibitory effect on osteoclast activity lowers blood calcium levels and positively influences bone mass density.		
Form	Lyophilized powder		
CAS Number	21215-62-3		
Molecular Formula	C151H226N40O45S3		
Molecular Weight	3417.87		
Purity	> 95%		
Chemical Structure	Cys - Gly - Asn - Leu - Ser - Thr - Cys - Met - Leu - Gly - Thr - Tyr - Thr - Gln - Asp - Phe - Asn - Lys - Phe - His - Thr - Phe - Pro - Gln - Thr - Ala - Ile - Gly - Val - Gly - Ala - Pro - NH ₂ (Disulfide bridge Cys1 - Cys7)		
Storage/Stability	Shipped at 4°C. Store at -20°C for one year.		

Structure



Application key: E- ELISA, WB- Western blot, IH- Immunohistochemistry, IF- Immunofluorescence, FC- Flow cytometry, IC- Immunocytochemistry, IP- Immunoprecipitation, ChIP- Chromatin Immunoprecipitation, EMSA- Electrophoretic Mobility Shift Assay, SE- Sandwich ELISA, CBE- Cell-based ELISA, RNAi- RNA interference

Species reactivity key: H- Human, M- Mouse, R- Rat, B- Bovine, C- Chicken, D- Dog, Mk- Monkey, P- Pig, Rb- Rabbit, S- Sheep, Z- Zebrafish

COHESION BIOSCIENCES LIMITED

WEB
www.cohesionbio.com

ORDER
order@cohesionbio.com

SUPPORT
techsupport@cohesionbio.com

CUSTOM
custom@cohesionbio.com