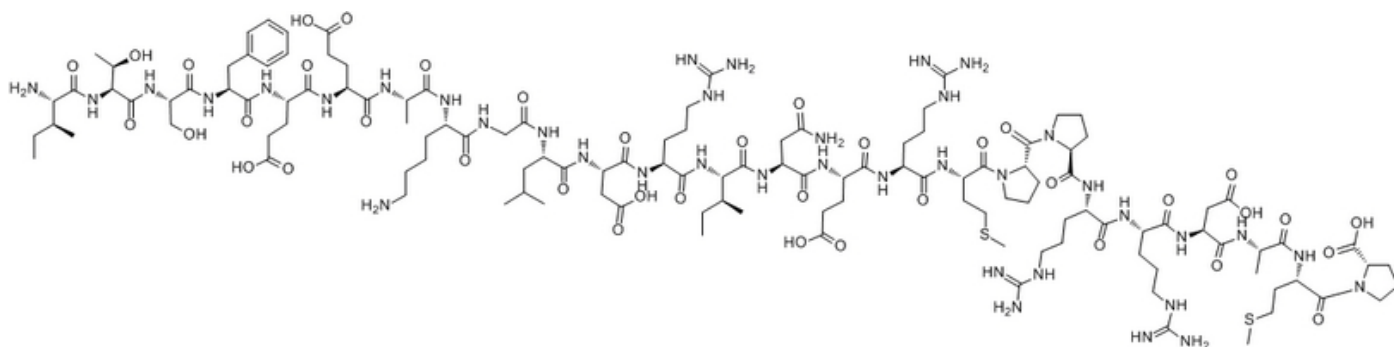


Calcineurin Autoinhibitory Peptide

Catalog #	Source	Reactivity	Applications
CCP1134	Synthetic		
Description	Peptide to Calcineurin Autoinhibitory Peptide		
Biological Description	The 25 amino acid peptide ITSFEEAKGLDRINERMPPRRDAMP corresponding to a region of the carboxyterminus of calcineurin, a Ca ²⁺ /calmodulin-dependent protein phosphatase, completely inhibited the phosphatase activity of calcineurin.		
Form	Lyophilized powder		
CAS Number	148067-21-4		
Molecular Formula	C124H205N39O39S2		
Molecular Weight	2930.38		
Purity	> 95%		
Chemical Structure	H - Ile - Thr - Ser - Phe - Glu - Glu - Ala - Lys - Gly - Leu - Asp - Arg - Ile - Asn - Glu - Arg - Met - Pro - Pro - Arg - Arg - Asp - Ala - Met - Pro - OH		
Storage/Stability	Shipped at 4°C. Store at -20°C for one year.		

Structure



Application key: E- ELISA, WB- Western blot, IH- Immunohistochemistry, IF- Immunofluorescence, FC- Flow cytometry, IC- Immunocytochemistry, IP- Immunoprecipitation, CHIP- Chromatin Immunoprecipitation, EMSA- Electrophoretic Mobility Shift Assay, SE- Sandwich ELISA, CBE- Cell-based ELISA, RNAi- RNA interference

Species reactivity key: H- Human, M- Mouse, R- Rat, B- Bovine, C- Chicken, D- Dog, Mk- Monkey, P- Pig, Rb- Rabbit, S- Sheep, Z- Zebrafish

COHESION BIOSCIENCES LIMITED

WEB
www.cohesionbio.com

ORDER
order@cohesionbio.com

SUPPORT
techsupport@cohesionbio.com

CUSTOM
custom@cohesionbio.com