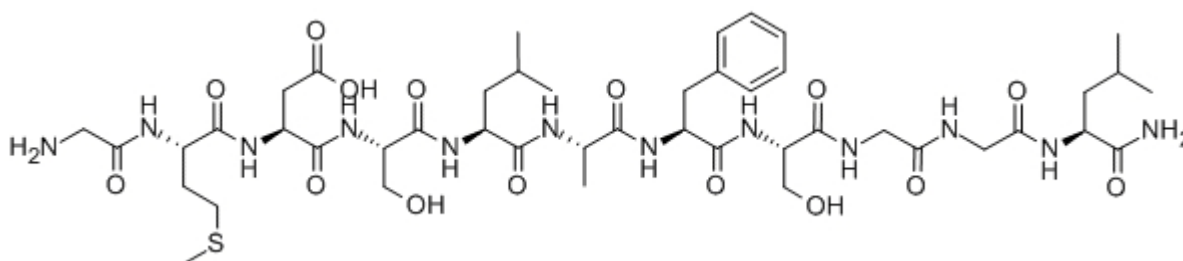


Buccalin

Catalog #	Source	Reactivity	Applications
CCP1132	Synthetic		
Description	Peptide to Buccalin		
Biological Description	<p>This modulatory neuropeptide has been colocalized with the small cardioactive peptides A and B to a single cholinergic motor neuron of <i>Aplysia californica</i>. Unlike the small cardioactive peptides, it seems to act presynaptically on the nerve terminals to i</p>		
Form	Lyophilized powder		
CAS Number	116786-35-7		
Molecular Formula	C ₄₅ H ₇₂ N ₁₂ O ₁₅ S		
Molecular Weight	1053.2		
Purity	> 95%		
Chemical Structure	Gly - Met - Asp - Ser - Leu - Ala - Phe - Ser - Gly - Gly - Leu - NH ₂		
Storage/Stability	Shipped at 4°C. Store at -20°C for one year.		

Structure



Application key: E- ELISA, WB- Western blot, IH- Immunohistochemistry, IF- Immunofluorescence, FC- Flow cytometry, IC- Immunocytochemistry, IP- Immunoprecipitation, CHIP- Chromatin Immunoprecipitation, EMSA- Electrophoretic Mobility Shift Assay, SE- Sandwich ELISA, CBE- Cell-based ELISA, RNAi- RNA interference

Species reactivity key: H- Human, M- Mouse, R- Rat, B- Bovine, C- Chicken, D- Dog, Mk- Monkey, P- Pig, Rb- Rabbit, S- Sheep, Z- Zebrafish

COHESION BIOSCIENCES LIMITED

WEB
www.cohesionbio.com

ORDER
order@cohesionbio.com

SUPPORT
techsupport@cohesionbio.com

CUSTOM
custom@cohesionbio.com