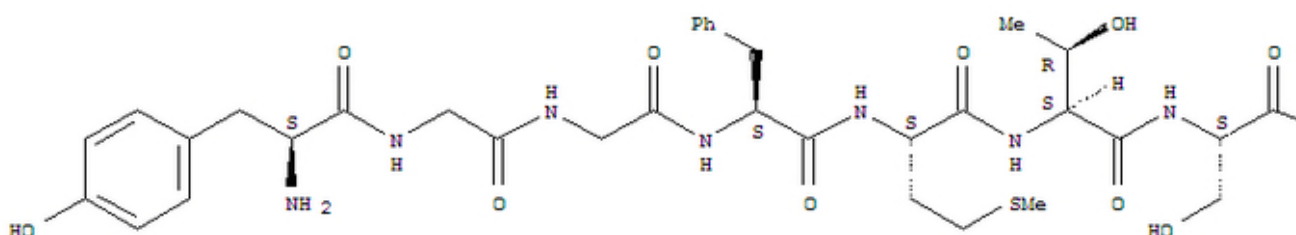


## Beta-Endorphin, Human

Catalog #	Source	Reactivity	Applications
CCP1107	Synthetic		
<b>Description</b>	Peptide to Beta-Endorphin, Human		
<b>Biological Description</b>			
<b>Form</b>	Lyophilized powder		
<b>CAS Number</b>	61214-51-5		
<b>Molecular Formula</b>	C158H251N39O46S		
<b>Molecular Weight</b>	3465.06		
<b>Purity</b>	> 95%		
<b>Chemical Structure</b>	H - Tyr - Gly - Gly - Phe - Met - Thr - Ser - Glu - Lys - Ser - Gln - Thr - Pro - Leu - Val - Thr - Leu - Phe - Lys - Asn - Ala - Ile - Ile - Lys - Asn - Ala - Tyr - Lys - Lys - Gly - Glu - OH		
<b>Storage/Stability</b>	Shipped at 4°C. Store at -20°C for one year.		
<b>Structure</b>			

PAGE 1-A



**Application key:** E- ELISA, WB- Western blot, IH- Immunohistochemistry, IF- Immunofluorescence, FC- Flow cytometry, IC- Immunocytochemistry, IP- Immunoprecipitation, CHIP- Chromatin Immunoprecipitation, EMSA- Electrophoretic Mobility Shift Assay, SE- Sandwich ELISA, CBE- Cell-based ELISA, RNAi- RNA interference

**Species reactivity key:** H- Human, M- Mouse, R- Rat, B- Bovine, C- Chicken, D- Dog, Mk- Monkey, P- Pig, Rb- Rabbit, S- Sheep, Z- Zebrafish

### COHESION BIOSCIENCES LIMITED

**WEB**  
www.cohesionbio.com

**ORDER**  
order@cohesionbio.com

**SUPPORT**  
techsupport@cohesionbio.com

**CUSTOM**  
custom@cohesionbio.com