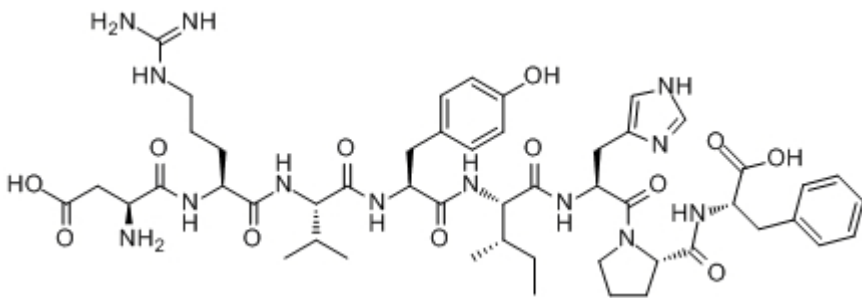
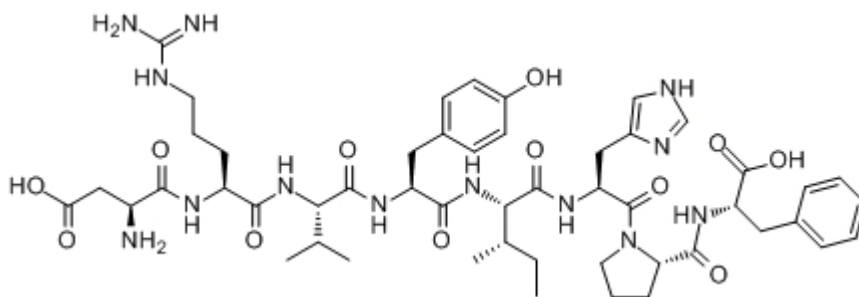


Angiotensin II, Human

Catalog #	Source	Reactivity	Applications
CCP1078	Synthetic		
Description	Peptide to Angiotensin II, Human		
Biological Description	Angiotensin II, DRVYIHPF, is the major biologically active component of the renin-angiotensin system. Its activities include the regulation of blood pressure, salt and water balance, and vascular tonus. Ang II stimulates various enzymes such as NADPH oxid		
Form	Lyophilized powder		
CAS Number	4474-91-3		
Molecular Formula	C ₅₀ H ₇₁ N ₁₃ O ₁₂		
Molecular Weight	1046.19		
Purity	> 95%		
Chemical Structure	Asp - Arg - Val - Tyr - Ile - His - Pro - Phe		
Storage/Stability	Shipped at 4°C. Store at -20°C for one year.		
Structure			



Application key: E- ELISA, WB- Western blot, IH- Immunohistochemistry, IF- Immunofluorescence, FC- Flow cytometry, IC- Immunocytochemistry, IP- Immunoprecipitation, CHIP- Chromatin Immunoprecipitation, EMSA- Electrophoretic Mobility Shift Assay, SE- Sandwich ELISA, CBE- Cell-based ELISA, RNAi- RNA interference

Species reactivity key: H- Human, M- Mouse, R- Rat, B- Bovine, C- Chicken, D- Dog, Mk- Monkey, P- Pig, Rb- Rabbit, S- Sheep, Z- Zebrafish

COHESION BIOSCIENCES LIMITED

WEB
www.cohesionbio.com

ORDER
order@cohesionbio.com

SUPPORT
techsupport@cohesionbio.com

CUSTOM
custom@cohesionbio.com