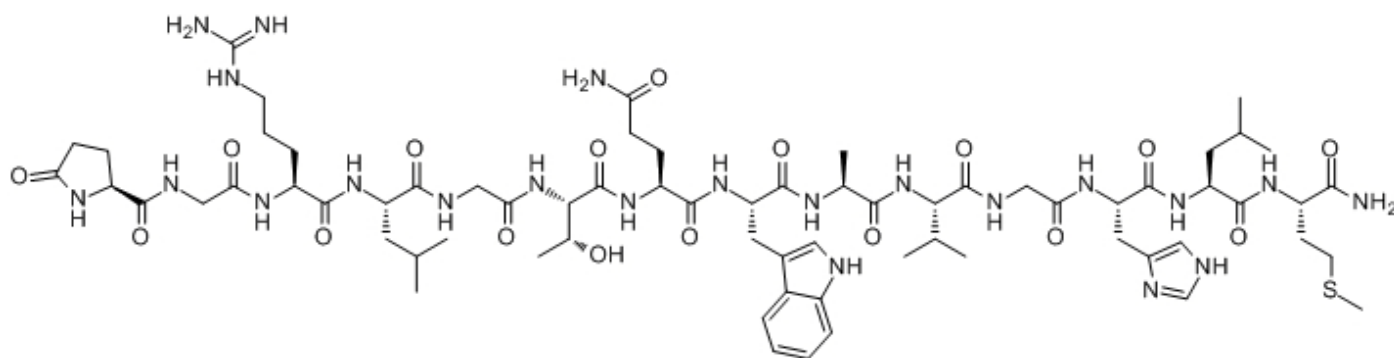


Alytesin

Catalog #	Source	Reactivity	Applications
CCP1065	Synthetic		
Description	Peptide to Alytesin		
Biological Description	Alytesin, a peptide possessing a structure very similar to that of bombesin and displaying the same biological actions, has originally been isolated from the skin of the European amphibian, Alytes obstetricans.		
Form	Lyophilized powder		
CAS Number	31078-12-3		
Molecular Formula	C68H106N22O17S		
Molecular Weight	1535.8		
Purity	> 95%		
Chemical Structure	pGlu - Gly - Arg - Leu - Gly - Thr - Gln - Trp - Ala - Val - Gly - His - Leu - Met - NH ₂		
Storage/Stability	Shipped at 4°C. Store at -20°C for one year.		

Structure



Application key: E- ELISA, WB- Western blot, IH- Immunohistochemistry, IF- Immunofluorescence, FC- Flow cytometry, IC- Immunocytochemistry, IP- Immunoprecipitation, CHIP- Chromatin Immunoprecipitation, EMSA- Electrophoretic Mobility Shift Assay, SE- Sandwich ELISA, CBE- Cell-based ELISA, RNAi- RNA interference

Species reactivity key: H- Human, M- Mouse, R- Rat, B- Bovine, C- Chicken, D- Dog, Mk- Monkey, P- Pig, Rb- Rabbit, S- Sheep, Z- Zebrafish

COHESION BIOSCIENCES LIMITED

WEB
www.cohesionbio.com

ORDER
order@cohesionbio.com

SUPPORT
techsupport@cohesionbio.com

CUSTOM
custom@cohesionbio.com