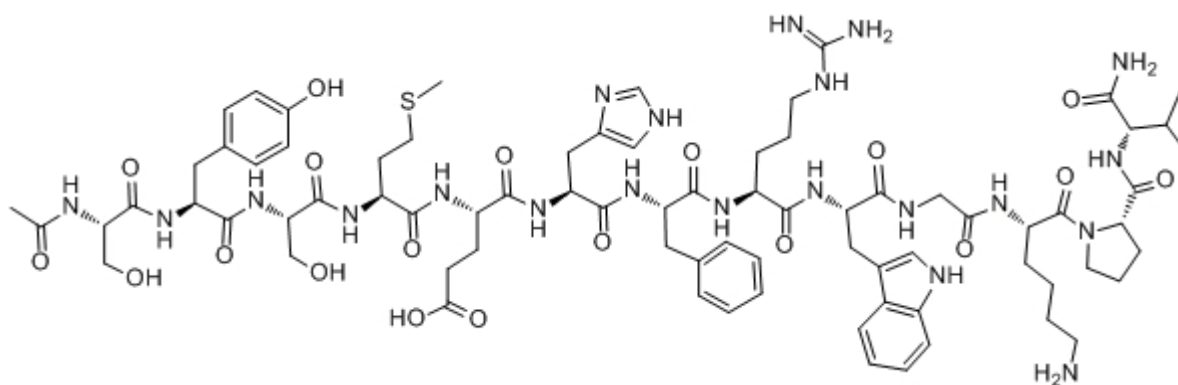


## Alpha-MSH

Catalog #	Source	Reactivity	Applications
CCP1064	Synthetic		
<b>Description</b>	Peptide to Alpha-MSH		
<b>Biological Description</b>	Alpha-MSH, also known as $\alpha$ -melanocyte-stimulating hormone ( $\alpha$ -MSH), is a 13-amino acid peptide originally characterized as a neuropeptide derived from the pituitary gland. $\alpha$ -MSH is synthesized from pro-opiomelanocortin (POMC) by the action of specific proh		
<b>Form</b>	Lyophilized powder		
<b>CAS Number</b>	581-05-5		
<b>Molecular Formula</b>	C77H109N21O19S		
<b>Molecular Weight</b>	1664.9		
<b>Purity</b>	> 95%		
<b>Chemical Structure</b>	Ac - Ser - Tyr - Ser - Met - Glu - His - Phe - Arg - Trp - Gly - Lys - Pro - Val - NH <sub>2</sub>		
<b>Storage/Stability</b>	Shipped at 4°C. Store at -20°C for one year.		
<b>Structure</b>			



**Application key:** E- ELISA, WB- Western blot, IH- Immunohistochemistry, IF- Immunofluorescence, FC- Flow cytometry, IC- Immunocytochemistry, IP- Immunoprecipitation, CHIP- Chromatin Immunoprecipitation, EMSA- Electrophoretic Mobility Shift Assay, SE- Sandwich ELISA, CBE- Cell-based ELISA, RNAi- RNA interference

**Species reactivity key:** H- Human, M- Mouse, R- Rat, B- Bovine, C- Chicken, D- Dog, Mk- Monkey, P- Pig, Rb- Rabbit, S- Sheep, Z- Zebrafish

### COHESION BIOSCIENCES LIMITED

**WEB**  
www.cohesionbio.com

**ORDER**  
order@cohesionbio.com

**SUPPORT**  
techsupport@cohesionbio.com

**CUSTOM**  
custom@cohesionbio.com