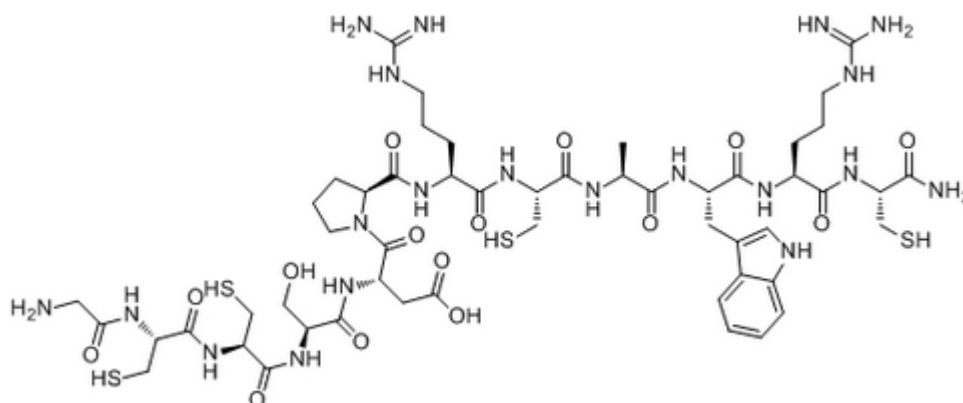


Alpha-Conotoxin IMI

Catalog #	Source	Reactivity	Applications
CCP1062	Synthetic		
Description	Peptide to Alpha-Conotoxin IMI		
Biological Description	Alpha-Conotoxin IMI is a potent reversible blocker of acetylcholine receptor in the cone snail.		
Form	Lyophilized powder		
CAS Number	156467-85-5		
Molecular Formula	C52H74N20O15S4		
Molecular Weight	1347.58		
Purity	> 95%		
Chemical Structure	H - Gly - Cys - Cys - Ser - Asp - Pro - Arg - Cys - Ala - Trp - Arg - Cys - NH ₂ (Disulfide bridge Cys2 - Cys8, Cys3 - Cys12)		
Storage/Stability	Shipped at 4°C. Store at -20°C for one year.		

Structure



Application key: E- ELISA, WB- Western blot, IH- Immunohistochemistry, IF- Immunofluorescence, FC- Flow cytometry, IC- Immunocytochemistry, IP- Immunoprecipitation, ChIP- Chromatin Immunoprecipitation, EMSA- Electrophoretic Mobility Shift Assay, SE- Sandwich ELISA, CBE- Cell-based ELISA, RNAi- RNA interference

Species reactivity key: H- Human, M- Mouse, R- Rat, B- Bovine, C- Chicken, D- Dog, Mk- Monkey, P- Pig, Rb- Rabbit, S- Sheep, Z- Zebrafish

COHESION BIOSCIENCES LIMITED

WEB

www.cohesionbio.com

ORDER

order@cohesionbio.com

SUPPORT

techsupport@cohesionbio.com

CUSTOM

custom@cohesionbio.com