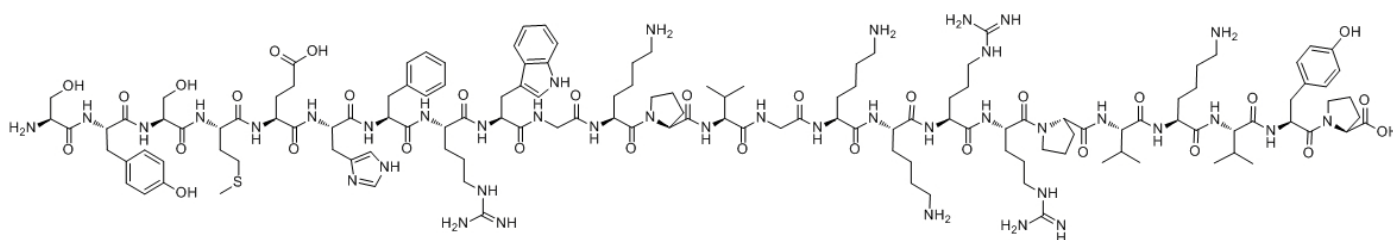


ACTH (1-24), Human

Catalog #	Source	Reactivity	Applications
CCP1035	Synthetic		
Description	Peptide to ACTH (1-24), Human		
Biological Description	Tetracosactide, a C-terminally truncated ACTH, still exhibits corticotropic activity, but it is less immunogenic than the full-length peptide hormone. The peptide induces an increase in the circulating level of glucocorticoids.		
Form	Lyophilized powder		
CAS Number	16960-16-0		
Molecular Formula	C136H210N40O31S		
Molecular Weight	2933.5		
Purity	> 95%		
Chemical Structure	H - Ser - Tyr - Ser - Met - Glu - His - Phe - Arg - Trp - Gly - Lys - Pro - Val - Gly - Lys - Lys - Arg - Arg - Pro - Val - Lys - Val - Tyr - Pro - OH		
Storage/Stability	Shipped at 4°C. Store at -20°C for one year.		

Structure



Application key: E- ELISA, WB- Western blot, IH- Immunohistochemistry, IF- Immunofluorescence, FC- Flow cytometry, IC- Immunocytochemistry, IP- Immunoprecipitation, CHIP- Chromatin Immunoprecipitation, EMSA- Electrophoretic Mobility Shift Assay, SE- Sandwich ELISA, CBE- Cell-based ELISA, RNAi- RNA interference

Species reactivity key: H- Human, M- Mouse, R- Rat, B- Bovine, C- Chicken, D- Dog, Mk- Monkey, P- Pig, Rb- Rabbit, S- Sheep, Z- Zebrafish

COHESION BIOSCIENCES LIMITED

WEB
www.cohesionbio.com

ORDER
order@cohesionbio.com

SUPPORT
techsupport@cohesionbio.com

CUSTOM
custom@cohesionbio.com