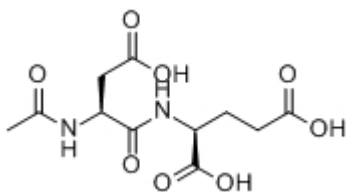
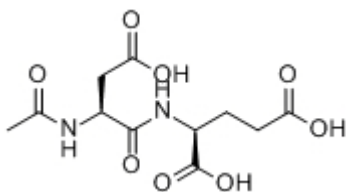


Ac-D-E

Catalog #	Source	Reactivity	Applications
CCP1023	Synthetic		
Description	Peptide to Ac-D-E		
Biological Description	An endogenous peptide with high affinity for a brain glutamate receptor. NAAG is the most abundant peptide neurotransmitter in the mammalian central nervous system.		
Form	Lyophilized powder		
CAS Number	3106-85-2		
Molecular Formula	C ₁₁ H ₁₆ N ₂ O ₈		
Molecular Weight	304.3		
Purity	> 95%		
Chemical Structure	Ac - Asp - Glu - OH		
Storage/Stability	Shipped at 4°C. Store at -20°C for one year.		
Structure			



Application key: E- ELISA, WB- Western blot, IH- Immunohistochemistry, IF- Immunofluorescence, FC- Flow cytometry, IC- Immunocytochemistry, IP- Immunoprecipitation, ChIP- Chromatin Immunoprecipitation, EMSA- Electrophoretic Mobility Shift Assay, SE- Sandwich ELISA, CBE- Cell-based ELISA, RNAi- RNA interference

Species reactivity key: H- Human, M- Mouse, R- Rat, B- Bovine, C- Chicken, D- Dog, Mk- Monkey, P- Pig, Rb- Rabbit, S- Sheep, Z- Zebrafish

COHESION BIOSCIENCES LIMITED

WEB
www.cohesionbio.com

ORDER
order@cohesionbio.com

SUPPORT
techsupport@cohesionbio.com

CUSTOM
custom@cohesionbio.com