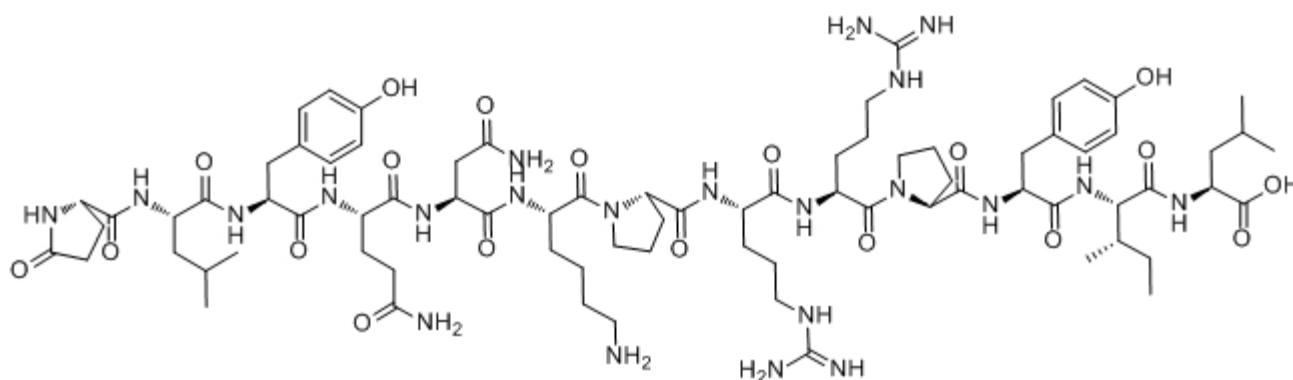


[Gln4]-Neurotensin

Catalog #	Source	Reactivity	Applications
CCP1007	Synthetic		
Description	Peptide to [Gln4]-Neurotensin		
Biological Description	In the corpus striatum, this analog was twice as active as neurotensin and tended to be more active also in other brain regions.		
Form	Lyophilized powder		
CAS Number	61445-54-3		
Molecular Formula	C78H122N22O19		
Molecular Weight	1671.9		
Purity	> 95%		
Chemical Structure	pGlu - Leu - Tyr - Gln - Asn - Lys - Pro - Arg - Arg - Pro - Tyr - Ile - Leu - OH		
Storage/Stability	Shipped at 4°C. Store at -20°C for one year.		

Structure



Application key: E- ELISA, WB- Western blot, IH- Immunohistochemistry, IF- Immunofluorescence, FC- Flow cytometry, IC- Immunocytochemistry, IP- Immunoprecipitation, ChIP- Chromatin Immunoprecipitation, EMSA- Electrophoretic Mobility Shift Assay, SE- Sandwich ELISA, CBE- Cell-based ELISA, RNAi- RNA interference

Species reactivity key: H- Human, M- Mouse, R- Rat, B- Bovine, C- Chicken, D- Dog, Mk- Monkey, P- Pig, Rb- Rabbit, S- Sheep, Z- Zebrafish

COHESION BIOSCIENCES LIMITED

WEB
www.cohesionbio.com

ORDER
order@cohesionbio.com

SUPPORT
techsupport@cohesionbio.com

CUSTOM
custom@cohesionbio.com